



# 992

## Wheel Loader

# Technical Specifications

Configurations and features may vary by region. Please consult your Cat® dealer for availability in your area.

### Table of Contents

<b>Specifications</b> .....	<b>2</b>
Engine .....	2
Operating Specifications .....	2
Transmission .....	2
Hydraulic System – Lift/Tilt .....	2
Hydraulic Cycle Time .....	3
Service Refill Capacities .....	3
Axles .....	3
Brakes .....	3
Hydraulic System – Steering .....	3
Cooling System .....	3
Sound Performance .....	3
Dimensions .....	4
Bucket Selection Guide .....	5
Face Application .....	5
Loose/Rehandled Application .....	5
Operating Specifications:	
Standard Lift .....	6
High Lift .....	8
Standard Lift Material Handler/High Lift Material Handler .....	10
<b>Standard and Optional Equipment</b> .....	<b>12</b>

# 992 Wheel Loader Specifications

Engine		
Engine Model	Cat® C32B	
Emissions	U.S. EPA Tier 4 Final, U.S. EPA Tier 2 Equivalent	
Rated Speed	1,750 rpm	
Gross Power – SAE J1995 @ 1,750 rpm		
Tier 4/HRC (Highly Regulated Country) – Standard	671 kW	900 hp
Tier 4/HRC – High Ambient	699 kW	937 hp
Tier 2/LRC (Less Regulated Country) – Standard	676 kW	907 hp
Tier 2/LRC – High Ambient	704 kW	944 hp
Gross Power – ISO 14396 @ 1,750 rpm		
Tier 4/HRC – Standard	659 kW	884 hp
Tier 4/HRC – High Ambient	687 kW	921 hp
Tier 2/LRC – Standard	666 kW	893 hp
Tier 2/LRC – High Ambient	694 kW	931 hp
Net Power – SAE J1349 @ 1,750 rpm		
Tier 4/HRC – Standard	607 kW	814 hp
Tier 4/HRC – High Ambient	607 kW	814 hp
Tier 2/LRC – Standard	614 kW	823 hp
Tier 2/LRC – High Ambient	614 kW	823 hp
Bore	145 mm	5.7 in
Stroke	162 mm	6.4 in
Displacement	32.1 L	1,963.5 in <sup>3</sup>
Peak Torque – SAE J1995		
Tier 4/HRC – Standard @ 1,200 rpm	4765 N·m	3,514 lbf-ft
Tier 4/HRC – High Ambient @ 1,300 rpm	4820 N·m	3,555 lbf-ft
Tier 2/LRC – Standard @ 1,200 rpm	4796 N·m	3,537 lbf-ft
Tier 2/LRC – High Ambient @ 1,350 rpm	4841 N·m	3,570 lbf-ft

Operating Specifications		
Operating Weight	105 882 kg	233,430 lb
Rated Payload – Standard	23.1 tonnes	25.5 tons
Rated Payload – Standard (Material Handler)	27.2 tonnes	30 tons
Rated Payload – High Lift	20.4 tonnes	22.5 tons
Rated Payload – High Lift (Material Handler)	24.5 tonnes	27 tons
Bucket Capacity Range	11.5-24.5 m <sup>3</sup>	15-32 yd <sup>3</sup>
Cat Truck Match – Standard	775/777/785	
Cat Truck Match – High Lift	777/785	

Transmission		
Transmission Type	Cat Planetary Powershift	
Forward 1	7 km/h	4.3 mph
Forward 2	11.9 km/h	7.4 mph
Forward 3	20.5 km/h	12.7 mph
Direct Drive – Forward 1	Disabled	Disabled
Direct Drive – Forward 2	12.9 km/h	8 mph
Direct Drive – Forward 3	22.6 km/h	14 mph
Reverse 1	7.5 km/h	4.7 mph
Reverse 2	13 km/h	8.1 mph
Reverse 3	22.4 km/h	13.9 mph
Direct Drive – Reverse 1	8 km/h	5 mph
Direct Drive – Reverse 2	14.2 km/h	8.8 mph
Direct Drive – Reverse 3	24.7 km/h	15.3 mph

Hydraulic System – Lift/Tilt		
Lift/Tilt System – Circuit	Positive Flow Control	
Lift/Tilt System – Pumps	Variable Displacement Piston	
Maximum Flow @ 2,165 rpm	950 L/min	250 gal/min
Relief Valve Setting – Lift/Tilt	34 500 kPa	5,000 psi
Lift Cylinder – Bore	235.0 mm	9.3 in
Lift Cylinder – Stroke	1613 mm	63.5 in
Tilt Cylinder – Bore	292 mm	11.5 in
Tilt Cylinder – Stroke	1055 mm	41.5 in

# 992 Wheel Loader Specifications

## Hydraulic Cycle Time

Rack Back	
Standard	2.3 seconds
High Lift	2.3 seconds
Raise	
Standard	9.0 seconds
High Lift	9.0 seconds
Dump	
Standard	2.6 seconds
High Lift	2.6 seconds
Float Down	
Standard	3.2 seconds
High Lift	3.2 seconds
Total Cycle Time	17.1 seconds

## Service Refill Capacities

Fuel Tank	1460 L	385.7 gal
Cooling System	225 L	59.4 gal
Crankcase	120 L	31.7 gal
Transmission	195 L	51.5 gal
Differentials and Final Drives – Front	365 L	96.4 gal
Differentials and Final Drives – Rear	365 L	96.4 gal
Hydraulic System Factory Fill (Implement)	394 L	104.1 gal
Hydraulic Tank (Implement Tank Only)	228 L	60.2 gal
Hydraulic Factory Fill (Steering)	123 L	32.5 gal
Hydraulic Tank (Steering Tank Only)	99.5 L	26.3 gal

## Axles

Front	Fixed
Rear	Trunnion
Oscillation Angle	±9°

## Brakes

Brakes	ISO 3450:2011
--------	---------------

## Hydraulic System – Steering

Steering System – Circuit	Pilot, Load Sensing
Steering System – Pump	Piston, Variable Displacement
Maximum Flow @ 1,400-1,850 rpm	265 L/min 70 gal/min
Steering Cut-Off Pressure	31 000 kPa 4,500 psi
Total Steering Angle	80°
Steering Cycle Time (Low Idle)	4.9 seconds
Steering Cycle Time (High Idle)	3.1 seconds

## Cooling System

Ambient Capability, Hydraulically Driven Demand Fan

Standard	43° C	109.4° F
High	55° C	131° F

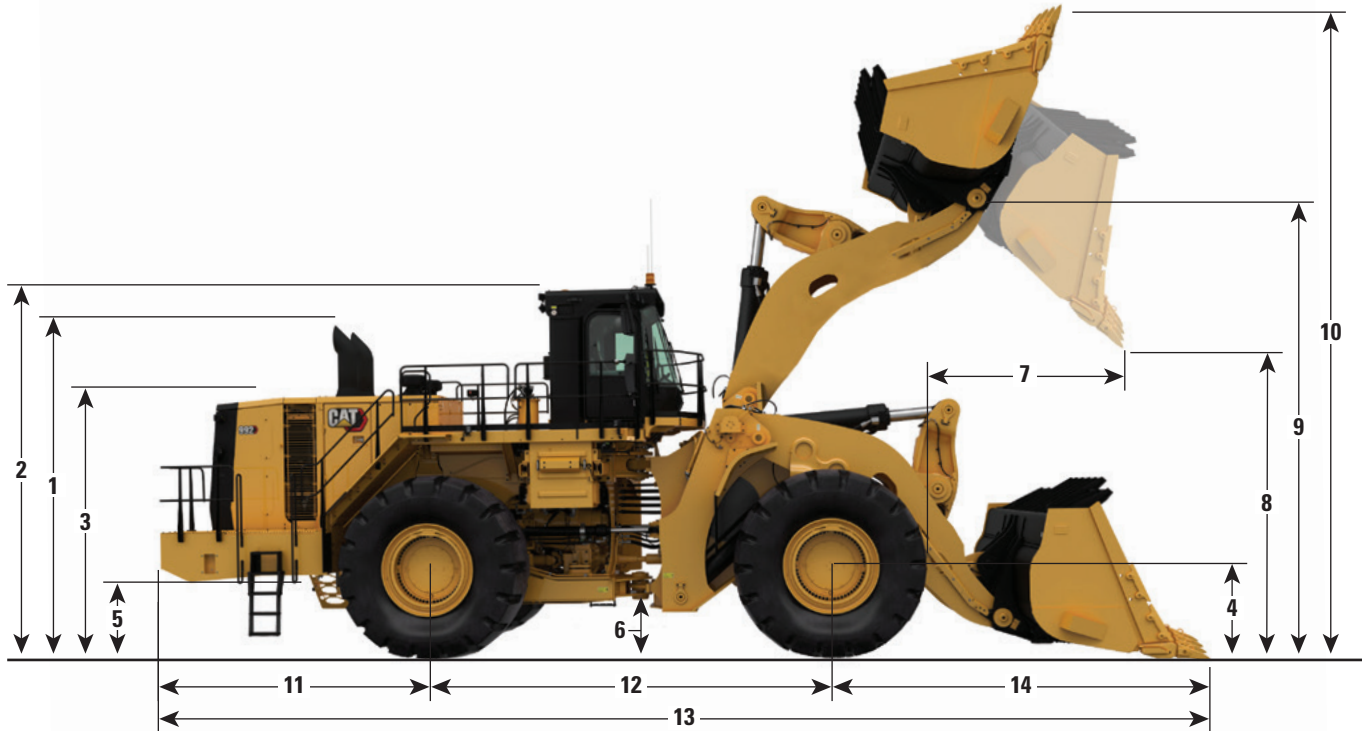
## Sound Performance

Sound Levels	Standard	Suppression
Operator Sound Level (ISO 6396:2008)	70 dB(A)	70 dB(A)
Machine Sound Level (ISO 6396:2008)	116 dB(A)	113 dB(A)

# 992 Wheel Loader Specifications

## Dimensions

All dimensions are approximate.



	Standard Lift 13 m <sup>3</sup> (17 yd <sup>3</sup> ) Bucket		High Lift 11.5 m <sup>3</sup> (15 yd <sup>3</sup> ) Bucket	
1 Ground to Top of Exhaust Stacks	5169 mm	17.0 ft	5169 mm	17.0 ft
2 Ground to Top of ROPS	5571 mm	18.3 ft	5571 mm	18.3 ft
3 Ground to Top of Hood	3983 mm	13.1 ft	3983 mm	13.1 ft
4 Ground to Center of Front Axle	1308 mm	4.3 ft	1308 mm	4.3 ft
5 Ground to Bumper Clearance	1145 mm	3.8 ft	1145 mm	3.8 ft
6 Ground to Lower Hitch Clearance	666 mm	2.2 ft	666 mm	2.2 ft
7 Reach at Maximum Lift	2503 mm	8.2 ft	2319 mm	7.6 ft
8 Clearance at Maximum Lift	4630 mm	15.2 ft	5256 mm	17.2 ft
9 B-Pin Height at Maximum Lift	6948 mm	22.8 ft	7465 mm	24.5 ft
10 Maximum Overall Height, Bucket Raised	9390 mm	30.8 ft	9759 mm	32.0 ft
11 Rear Axle Center Line to Bumper	4119 mm	13.5 ft	4119 mm	13.5 ft
12 Wheel Base	5890 mm	19.3 ft	5890 mm	19.3 ft
13 Maximum Overall Length	15 489 mm	50.8 ft	15 733 mm	51.6 ft
14 Front Axle Centerline to Bucket Tip	5480 mm	18.0 ft	5724 mm	18.8 ft

## Bucket Selection Guide

When sizing the bucket, it is important to consider the Maximum Swung Load. The Maximum Swung Load is defined as the maximum allowed combined weight of the bucket and payload. Large Wheel Loader Payload Policy is that the Maximum Swung Load should never be exceeded.

“Example Bucket Weight” includes spade edge, heavy duty tips, half arrow segments, and two sidebar protectors.

If a bucket weight other than the weight specified in the tables is chosen, the bucket size can be evaluated using the following equations:

$$\text{Maximum Payload} = \text{Maximum Swung Load} - \text{Bucket Weight}$$

$$\text{Maximum Density} = (\text{Maximum Swung Load} - \text{Bucket Weight}) / \text{Bucket Volume}$$

**Note:** The default Target Payload (90% of maximum payload) is intended to accommodate variation in payload without exceeding the Maximum Swung Load. Target payload can be higher with less variation.

The rated capacity of the tires should always be considered.

## Face Application

**Standard Lift: Rated Payload 23.1 tonnes (25.5 tons), Maximum Swung Load 36.5 tonnes (40.2 tons)**

Bucket Volume		Example Bucket Weight		Target Payload at Example Bucket Weight		Maximum Payload at Example Bucket Weight		Target Density at Example Bucket Weight		Maximum Density at Example Bucket Weight	
m <sup>3</sup>	yd <sup>3</sup>	kg	lb	tonnes	tons	tonnes	tons	kg/m <sup>3</sup>	lb/yd <sup>3</sup>	kg/m <sup>3</sup>	lb/yd <sup>3</sup>
11.5	15	10 378	22,873	23.6	26.0	26.2	28.9	2056	3,465	2284	3,850
13.0	17	10 872	23,961	23.1	25.5	25.7	28.3	1780	3,000	1978	3,333
14.5	19	11 355	25,026	22.7	25.0	25.2	27.8	1563	2,634	1736	2,926

**High Lift: Rated Payload 20.4 tonnes (22.5 tons), Maximum Swung Load 33.0 tonnes (36.4 tons)**

Bucket Volume		Example Bucket Weight		Target Payload at Example Bucket Weight		Maximum Payload at Example Bucket Weight		Target Density at Example Bucket Weight		Maximum Density at Example Bucket Weight	
m <sup>3</sup>	yd <sup>3</sup>	kg	lb	tonnes	tons	tonnes	tons	kg/m <sup>3</sup>	lb/yd <sup>3</sup>	kg/m <sup>3</sup>	lb/yd <sup>3</sup>
11.5	15	10 378	22,873	20.4	22.5	22.7	25.0	1780	3,000	1978	3,333
13.0	17	10 872	23,962	20.0	22.0	22.2	24.5	1536	2,589	1707	2,877
14.5	19	11 355	25,026	19.5	21.5	21.7	23.9	1345	2,266	1494	2,518

## Loose/Rehandled Application

**Standard Lift: Rated Payload 27.2 tonnes (30 tons), Maximum Swung Load 39.7 tonnes (43.8 tons)**

Bucket Volume		Example Bucket Weight		Target Payload at Example Bucket Weight		Maximum Payload at Example Bucket Weight		Target Density at Example Bucket Weight		Maximum Density at Example Bucket Weight	
m <sup>3</sup>	yd <sup>3</sup>	kg	lb	tonnes	tons	tonnes	tons	kg/m <sup>3</sup>	lb/yd <sup>3</sup>	kg/m <sup>3</sup>	lb/yd <sup>3</sup>
11.5	15	11 512	25,372	26.8	29.5	28.2	31.1	2213	3,730	2459	4,145
17.6	23	11 172	24,623	27.1	29.9	28.5	31.5	1461	2,462	1623	2,736
24.5	32	13 483	29,717	24.9	27.5	26.2	28.9	965	1,626	1072	1,807

**High Lift: Rated Payload 24.5 tonnes (27 tons), Maximum Swung Load 37 tonnes (40.8 tons)**

Bucket Volume		Example Bucket Weight		Target Payload at Example Bucket Weight		Maximum Payload at Example Bucket Weight		Target Density at Example Bucket Weight		Maximum Density at Example Bucket Weight	
m <sup>3</sup>	yd <sup>3</sup>	kg	lb	tonnes	tons	tonnes	tons	kg/m <sup>3</sup>	lb/yd <sup>3</sup>	kg/m <sup>3</sup>	lb/yd <sup>3</sup>
11.5	15	11 512	25,372	24.2	26.7	25.5	28.1	2000	3,372	2223	3,746
16.1	21	10 718	23,622	25.0	27.5	26.3	29.0	1473	2,483	1637	2,759
24.5	32	13 483	29,717	22.3	24.6	23.5	25.9	865	1,458	961	1,620

# 992 Wheel Loader Specifications

## Operating Specifications – Standard Lift

		Standard Lift		
Bucket Type		Rock		
Ground Engaging Tool		Teeth & Segment		
Cutting Edge Type		Spade		
Bucket Part Number		536-3340	538-7980	557-8090
Struck Capacity	m <sup>3</sup>	9.0	10.0	12.0
	yd <sup>3</sup>	11.8	13.0	15.7
Heaped Capacity (Rated)	m <sup>3</sup>	11.5	13	14.5
	yd <sup>3</sup>	15	17	19
Width	mm	4824	4824	4824
	ft	15.8	15.8	15.8
Dump Clearance at Full Lift and 45° Discharge (Edge)	mm	4985	4847	4752
	ft	16.4	15.9	15.6
Dump Clearance at Full Lift and 45° Discharge (With Teeth)	mm	4740	4630	4513
	ft	15.6	15.2	14.8
Reach at Lift and 45° Discharge (Edge)	mm	2160	2298	2379
	ft	7.1	7.5	7.8
Reach at Lift and 45° Discharge (With Teeth)	mm	2393	2503	2608
	ft	7.9	8.2	8.6
Reach with Lift Arms Horizontal and Bucket Level	mm	4939	5095	5252
	ft	16.2	16.7	17.2
Digging Depth	mm	206	206	217
	in	8.1	8.1	8.5
Overall Length	mm	15 334	15 490	15 654
	ft	50.3	50.8	51.4
Overall Height with Bucket at Full Raise	mm	9242	9390	9519
	ft	30.3	30.8	31.2
Loader Clearance Turning Radius (SAE Carry with Teeth)	mm	10 973	11 018	11 068
	ft	36.0	36.1	36.3
Full Dump Angle	degree	-50	-50	-50

(chart continued on next page)

# 992 Wheel Loader Specifications

## Operating Specifications – Standard Lift *(continued)*

		Standard Lift		
Bucket Type		Rock		
Ground Engaging Tool		Teeth & Segment		
Cutting Edge Type		Spade		
Bucket Part Number		536-3340	538-7980	557-8090
Struck Capacity	m <sup>3</sup>	9.0	10.0	12.0
	yd <sup>3</sup>	11.8	13.0	15.7
Heaped Capacity (Rated)	m <sup>3</sup>	11.5	13	14.5
	yd <sup>3</sup>	15	17	19
Static Tipping Load Straight (No Tire Squash)	kg	71 085	70 108	69 128
	lb	156,716	154,562	152,402
Static Tipping Load Straight (With Tire Squash)	kg	68 295	67 298	66 304
	lb	150,564	148,366	146,175
Static Tipping Load – Full Turn (Articulated 40°) (No Tire Squash)	kg	61 829	60 901	59 970
	lb	136,309	134,263	132,211
Static Tipping Load – Full Turn (Articulated 40°) (With Tire Squash)	kg	56 943	55 984	55 030
	lb	125,538	123,424	121,321
Breakout Force	kN	699	638	602
	lb	157,125	143,422	135,298
Operating Weight	kg	105 394	105 882	106 366
	lb	232,354	233,430	234,497
Weight Distribution at SAE Carry (Unloaded)				
Front	kg	59 137	59 994	60 865
	lb	130,374	132,265	134,185
Rear	kg	46 257	45 888	45 501
	lb	101,980	101,165	100,312
Weight Distribution at SAE Carry (Loaded)				
Front	kg	95 598	96 592	97 605
	lb	210,758	212,949	215,182
Rear	kg	32 929	32 423	31 894
	lb	72,595	71,481	70,314

*(chart continued on next page)*

# 992 Wheel Loader Specifications

## Operating Specifications – High Lift

		High Lift		
		Rock		
		Teeth & Segment		
		Spade		
Bucket Part Number		536-3340	538-7980	557-8090
Struck Capacity	m <sup>3</sup>	9.0	10.0	12.0
	yd <sup>3</sup>	11.8	13.0	15.7
Heaped Capacity (Rated)	m <sup>3</sup>	11.5	13	14.5
	yd <sup>3</sup>	15	17	19
Width	mm	4824	4824	4824
	ft	15.8	15.8	15.8
Dump Clearance at Full Lift and 45° Discharge (Edge)	mm	5501	5363	5268
	ft	18.0	17.6	17.3
Dump Clearance at Full Lift and 45° Discharge (With Teeth)	mm	5256	5146	5029
	ft	17.2	16.9	16.5
Reach at Lift and 45° Discharge (Edge)	mm	2086	2225	2305
	ft	6.8	7.3	7.6
Reach at Lift and 45° Discharge (With Teeth)	mm	2319	2430	2535
	ft	7.6	8.0	8.3
Reach with Lift Arms Horizontal and Bucket Level	mm	5266	5422	5579
	ft	17.3	17.8	18.3
Digging Depth	mm	213	213	224
	in	8.4	8.4	8.8
Overall Length	mm	15 733	15 889	16 053
	ft	51.6	52.1	52.7
Overall Height with Bucket at Full Raise	mm	9759	9906	10 036
	ft	32.0	32.5	32.9
Loader Clearance Turning Radius (SAE Carry with Teeth)	mm	11 129	11 174	11 224
	ft	36.5	36.7	36.8
Full Dump Angle	degree	-48	-48	-48

(chart continued on next page)



# 992 Wheel Loader Specifications

## Operating Specifications – High Lift *(continued)*

		High Lift		
		Rock		
		Teeth & Segment		
		Spade		
Bucket Part Number		536-3340	538-7980	557-8090
Struck Capacity	m <sup>3</sup>	9.0	10.0	12.0
	yd <sup>3</sup>	11.8	13.0	15.7
Heaped Capacity (Rated)	m <sup>3</sup>	11.5	13	14.5
	yd <sup>3</sup>	15	17	19
Static Tipping Load Straight (No Tire Squash)	kg	64 263	63 375	62 482
	lb	141,675	139,718	137,750
Static Tipping Load Straight (With Tire Squash)	kg	61 929	61 023	60 116
	lb	136,529	134,533	132,534
Static Tipping Load – Full Turn (Articulated 40°) (No Tire Squash)	kg	55 718	54 869	54 017
	lb	122,836	120,966	119,086
Static Tipping Load – Full Turn (Articulated 40°) (With Tire Squash)	kg	51 499	50 622	49 747
	lb	113,535	111,602	109,673
Breakout Force	kN	672	613	578
	lb	151,028	137,811	129,968
Operating Weight	kg	105 934	106 422	106 906
	lb	233,545	234,621	235,688
Weight Distribution at SAE Carry (Unloaded)				
Front	kg	60 723	61 605	62 500
	lb	133,870	135,816	137,788
Rear	kg	45 212	44 817	44 407
	lb	99,675	98,805	97,900
Weight Distribution at SAE Carry (Loaded)				
Front	kg	94 150	95 139	96 143
	lb	207,564	209,744	211,960
Rear	kg	32 197	31 696	31 175
	lb	70,981	69,877	68,729

*(chart continued on next page)*

# 992 Wheel Loader Specifications

## Operating Specifications – Standard Lift Material Handler/High Lift Material Handler

		Standard Lift Material Handler		High Lift Material Handler	
		Rock	Coal	Rock	Coal
<b>Bucket Type</b>		<b>BOCE</b>		<b>BOCE</b>	
<b>Ground Engaging Tool</b>		<b>BOCE</b>		<b>BOCE</b>	
<b>Cutting Edge Type</b>		<b>Straight</b>		<b>Straight</b>	
<b>Bucket Part Number</b>		<b>557-8050</b>	<b>557-8020</b>	<b>557-8050</b>	<b>557-8020</b>
Struck Capacity	m <sup>3</sup>	14.0	20.0	14.0	20.0
	yd <sup>3</sup>	18.3	26.2	18.3	26.2
Heaped Capacity (Rated)	m <sup>3</sup>	17.6	24.5	17.6	24.5
	yd <sup>3</sup>	23	32	23	32
Width	mm	4995	6090	4995	6090
	ft	16.4	20.0	16.4	20.0
Dump Clearance at Full Lift and 45° Discharge (Edge)	mm	4873	4710	5389	5226
	ft	16.0	15.5	17.7	17.1
Dump Clearance at Full Lift and 45° Discharge (With Teeth)	mm	—	—	—	—
	ft	—	—	—	—
Reach at Lift and 45° Discharge (Edge)	mm	2301	2451	2227	2377
	ft	7.5	8.0	7.3	7.8
Reach at Lift and 45° Discharge (With Teeth)	mm	—	—	—	—
	ft	—	—	—	—
Reach with Lift Arms Horizontal and Bucket Level	mm	4780	5001	5107	5328
	ft	15.7	16.4	16.8	17.5
Digging Depth	mm	186	195	193	202
	in	7.3	7.7	7.6	8.0
Overall Length	mm	15 160	15 388	15 561	15 788
	ft	49.7	50.5	51.1	51.8
Overall Height with Bucket at Full Raise	mm	9678	9835	10 194	10 351
	ft	31.8	32.3	33.4	34.0
Loader Clearance Turning Radius (SAE Carry with Teeth)	mm	11 157	11 751	11 311	11 898
	ft	36.6	38.6	37.1	39.0
Full Dump Angle	degree	-50	-50	-48	-48

(chart continued on next page)

# 992 Wheel Loader Specifications

## Operating Specifications – Standard Lift Material Handler/High Lift Material Handler *(continued)*

		Standard Lift Material Handler		High Lift Material Handler	
<b>Bucket Type</b>		<b>Rock</b>	<b>Coal</b>	<b>Rock</b>	<b>Coal</b>
<b>Ground Engaging Tool</b>		<b>BOCE</b>	<b>BOCE</b>	<b>BOCE</b>	<b>BOCE</b>
<b>Cutting Edge Type</b>		<b>Straight</b>	<b>Straight</b>	<b>Straight</b>	<b>Straight</b>
<b>Bucket Part Number</b>		<b>557-8050</b>	<b>557-8020</b>	<b>557-8050</b>	<b>557-8020</b>
Struck Capacity	m <sup>3</sup>	14.0	20.0	14.0	20.0
	yd <sup>3</sup>	18.3	26.2	18.3	26.2
Heaped Capacity (Rated)	m <sup>3</sup>	17.6	24.5	17.6	24.5
	yd <sup>3</sup>	23	32	23	32
Static Tipping Load Straight (No Tire Squash)	kg	74 070	70 667	67 126	63 913
	lb	163,296	155,794	147,987	140,905
Static Tipping Load Straight (With Tire Squash)	kg	70 958	67 574	64 519	61 316
	lb	156,435	148,975	142,239	135,177
Static Tipping Load – Full Turn (Articulated 40°) (No Tire Squash)	kg	64 158	60 888	57 956	54 854
	lb	141,443	134,235	127,770	120,933
Static Tipping Load – Full Turn (Articulated 40°) (With Tire Squash)	kg	58 598	55 356	53 136	50 052
	lb	129,187	122,038	117,145	110,345
Breakout Force	kN	640	572	614	549
	lb	143,788	128,559	138,121	123,370
Operating Weight	kg	108 182	110 493	108 722	111 033
	lb	238,501	243,595	239,692	244,786
Weight Distribution at SAE Carry (Unloaded)					
Front	kg	59 125	62 912	60 753	64 672
	lb	130,348	138,696	133,937	142,576
Rear	kg	49 057	47 581	47 969	46 362
	lb	108,153	104,899	105,754	102,210
Weight Distribution at SAE Carry (Loaded)					
Front	kg	102 525	106 661	101 271	105 481
	lb	226,029	235,147	223,263	232,546
Rear	kg	32 873	31 048	31 946	30 046
	lb	72,473	68,449	70,428	66,241

# 992 Standard and Optional Equipment

## Standard and Optional Equipment

Standard and optional equipment may vary. Consult your Cat dealer for details.

	Standard	Optional		Standard	Optional
<b>POWER TRAIN</b>			<b>ELECTRICAL AND LIGHTING</b>		
Engine, C32B	✓		150-amp alternator	✓	
Fuel priming pump (electric)	✓		Four 1400 CCA batteries	✓	
Ground-level engine shutdown	✓		10/15 amp, 24V to 12V converter	✓	
Engine air intake (above hood) precleaner	✓		Battery – single pole (master disconnect) isolator	✓	
Aluminum Modular Radiator (AMR)	✓		Emergency jump-start receptacle	✓	
Automatic, ether starting aid	✓		Starter and transmission lockout in bumper	✓	
Electronic throttle lock	✓		24V starting and charging system	✓	
Impeller Clutch Torque Converter (ICTC) with lock-up clutch	✓		Electric starters	✓	
Rimpull control system	✓		Dual pole battery isolator		✓
Planetary powershift, 3F/3R electronic control transmission	✓		Live line indicators in service center	✓	
Delayed engine shutdown	✓		LED warning lights (pattern selectable)	✓	
Oil-cooled, multi-disc, service brakes	✓		LED lighting system:	✓	
Electro-hydraulic parking brake	✓		– Two front- and rear-mounted LED turn signals		
Auto retarding controls	✓		– Four forward-facing running lights		
Advanced auto retarding controls with engine brake		✓	– Three forward-facing flood lights		
Brake temp estimator	✓		– Four platform-mounted flood lights		
Autoshift	✓		– Two forward-facing high beams		
<b>LINKAGE</b>			– Four rear-facing floods		
Standard lift (23 tonnes/25.5 tons face, 27.2 tonnes/30 tons loose)	✓		– Four stairway lights		
High lift (20.5 tonnes/22.5 tons face, 24.5 tonnes/27 tons loose)		✓	– Two engine bay service lights		
<b>EFFICIENCY</b>			Six service lights		✓
Variable displacement implement pumps	✓		Two hitch-mounted lights		✓
Variable displacement load-sensing steering	✓				
Variable displacement cooling fan pump	✓				
Torque converter lock-up clutch	✓				
Bucket float	✓				
Automatic bucket controls:	✓				
– Lift kickout					
– Return-to-dig kickout					
Default on-demand throttle (economy mode) with HP+ mode button	✓				
Engine idle shutdown	✓				

## Standard and Optional Equipment *(continued)*

Standard and optional equipment may vary. Consult your Cat dealer for details.

	Standard	Optional		Standard	Optional
<b>OPERATOR ENVIRONMENT</b>			<b>OPERATOR ENVIRONMENT <i>(continued)</i></b>		
Premium seat with heated and actively cooled leather, adjustable lumbar support, air adjustable bolsters on the seat and backrest, seat cushion tilt adjustment and two-way thigh support adjustment	✓		Powered cab precleaner	✓	
Bonded glass, tinted	✓		Operator presence status	✓	
Rubber-mounted, high-impact resistant solar control glass		✓	Starting/charging system malfunction	✓	
Trainer seat	✓		Electronic OMM	✓	
Trainer seat with suspension		✓	Operator controls help	✓	
Dual-lever lift and tilt function controls	✓		Bluetooth®-enabled machine security		✓
Joystick lift and tilt function controls		✓	Two USB charging ports	✓	
Implement kickouts	✓		CB mounting, 12V/24V power and antenna	✓	
Air conditioner	✓		14-pin service port	✓	
Cab pressure indicator	✓		12V power	✓	
Graphical touchscreen information display conveys real-time operating information and payload measurement	✓		Selectable application profiles	✓	
Heater, defroster, auto temperature controls	✓		Entertainment radio mute	✓	
Gauge instrumentation with configurable widgets:	✓		Push-To-Start (PTS)	✓	
– Status indicators			Warning/indicator instrumentation	✓	
– Wheel rev counter			Keypad control with indicator lights	✓	
– Simplified payload			Dome light in cab	✓	
– TPMS (optional)			Lunchbox and beverage holders	✓	
– Bucket angle			Electro-hydraulic force feedback steering	✓	
– Coolant temperature			Sun screen, pull down (front and rear)		✓
– Hydraulic oil temperature			Vital Information Management System (VIMS™) with information display: external data port, cycle timer	✓	
– Fuel level			AM/FM/AUX radio		✓
– Power train oil temperature			AM/FM/AUX/USB/BT/CD/SAT radio		✓
– Engine speed (tachometer)			Coat hook	✓	
– Transmission gear					
– Ground speed					
– Engine hour meter					

# 992 Standard and Optional Equipment

## Standard and Optional Equipment *(continued)*

Standard and optional equipment may vary. Consult your Cat dealer for details.

	Standard	Optional		Standard	Optional
<b>SAFETY</b>			<b>MACHINE CONTROL AND GUIDANCE</b>		
Ground-access ladders	✓		Cat Payload with Overload Prevention		✓
Powered ground-access stairs		✓	MineStar Health ready	✓	
Rear-vision camera	✓		MineStar GUIDE ready		
Side-vision cameras (270 degree)		✓	MineStar Edge ready		
Cat Detect (rear object detection)		✓	New Autodig Components:		✓
Front walkway around cab	✓		– Tire slip prevention		
Tie-offs on ROPS	✓		– Lift stall prevention		
Steering frame lock	✓		– Tire set		
Wheel chocks		✓	Operator coaching		✓
Stairways on both sides of the machine	✓		<b>COOLING</b>		
Platform toe kicks	✓		Standard ambient package (recommended for site conditions that do not exceed 43° C [110° F])	✓	
Retractable seatbelt, operator and trainer seat	✓		High ambient package (recommended for site conditions that do not exceed 55° C [131° F])		✓
Back-up alarm	✓		<b>RIMS AND TIRES</b>		
Secondary steering		✓	Rims – 914.4 mm (36") (36 × 45)		✓
Electric disc horns	✓		113.3 mm (4.5") flange		
Electric trumpet field horn plus electric shop horn		✓	For use with 45/65R45 and 45/65-45 tires		
Fire suppression ready (tank mounting provision and provision for integration with machine electronics for monitoring faults or activation)		✓	Tires – 45/65R45		
Emergency stop system		✓	Tires – 45/65-45		
Implement lock switch	✓		<b>SPARE RIMS</b>		
Seatbelt warning	✓		914.4 mm (36") (36 × 45)		✓
Entertainment radio mute	✓		(4.5") flange		
<b>COLD WEATHER</b>					
Cold-weather cooling fan bypass (recommended for temperatures below -29° C [-20° F])		✓			
120V or 240V coolant heating elements (recommended in conditions from -18° C to -30° C [0° F to -22° F])		✓			
Fuel heater (heated by recirculation using engine heat and a heat exchanger) (recommended in conditions from -18° C to -30° C [0° F to -22° F])		✓			
Heated mirrors		✓			

## Standard and Optional Equipment *(continued)*

Standard and optional equipment may vary. Consult your Cat dealer for details.

	Standard	Optional		Standard	Optional
<b>SERVICE</b>			<b>SERVICE <i>(continued)</i></b>		
Fluid level indicators:	✓		Implement pump efficiency monitoring	✓	
– Implement and cooling fan oil level indicator			Rock guards on linkage grease lines	✓	
– Steering and brake oil level indicator			Cat O-ring face seal couplings	✓	
– Window washer fluid level indicator			Lockable service access doors	✓	
– Transmission oil level indicator			Ecology drains for engine, radiator, hydraulic tank, steering and brake tank, brake cooling tank and axles	✓	
– Fuel level indicator			Electronic pressure control of the automatic lubrication system eliminates pressure adjustment and monitors grease thickness for temperature compatibility		
– Engine oil level indicator			Ground-level fast-fill fuel system	✓	
– Engine coolant level indicator			Transmission and engine guards		✓
– Automatic lubrication system grease tank level indicator			Drawbar hitch with pin	✓	
– Starter lockout and LED			Cat XT™ hoses	✓	
– Heavy-duty battery disconnect switch			Left-side service center	✓	
– Stairway light switch			Oil sampling valves	✓	
– Service lighting switch (if equipped)			Diagnostic lines for easy troubleshooting access		✓
– Fuel shutoff engine shutdown switch			Premixed 50% concentration of extended-life coolant with freeze protection to –34° C (–29° F)	✓	
– Engine oil fast-fill port			Rear access to cab and service platform	✓	
– Transmission oil fast-fill port			Load-sensing steering	✓	
– Steering and brake hydraulic oil fast-fill port			Vandalism protection caplocks	✓	
– Steering and brake hydraulic oil drain port			Cooling cleanout service access	✓	
– Engine coolant fast-fill port			Telematics and Cat Electronic Technician service port in bumper	✓	
– Implement and cooling fan hydraulic oil fast-fill port			Product Link™ cellular		✓
– Implement and cooling fan hydraulic oil drain port			Product Link (dual mode – satellite/cellular)		✓
– Automatic lubrication system grease tank fill port			Automatic Autolube filling shutoff valve	✓	
– 24V jump-start receptacle			<b>SOUND</b>		
– 12V power port			Sound-suppression package		✓
– 120V jacket water plug (if equipped)			<b>LOAD AND CARRY OR EXTENSIVE TRAMMING</b>		
– 240V jacket water plug (if equipped)			Ride control		✓
– VIMS key switch					
– 14-pin service port					
– Transmission lockout and LED					
In-tank mounted cartridge-type case drain filters with in-line magnetic plugs on implement, cooling fan, brake and steering pumps	✓				
High-pressure screens on the output side of implement, cooling fan, brake and steering pumps	✓				

For more complete information on Cat products, dealer services, and industry solutions, visit us on the web at [www.cat.com](http://www.cat.com)

© 2021 Caterpillar  
All rights reserved

Materials and specifications are subject to change without notice. Featured machines in photos may include additional equipment. See your Cat dealer for available options.

CAT, CATERPILLAR, LET'S DO THE WORK, their respective logos, "Caterpillar Corporate Yellow," the "Power Edge" and Cat "Modern Hex" trade dress as well as corporate and product identity used herein, are trademarks of Caterpillar and may not be used without permission.

AEXQ2899-02 (06-2021)  
Replaces AEXQ2899-01  
Build Number: 12A  
(Global)

