

B SIDE MOUNT HAMMERS



Models
B2, B4, B6, B8

Machine Compatibility
301.5-309CR

Machine model availability and attachment vary by region. Contact your local Cat® dealer for exact compatibility and availability.



Cat® B Hammers are suitable for use in a wide range of construction and general demolition applications – such as breaking concrete sidewalks and driveways, pavement, roads, masonry, site prep and landscaping, and breaking frozen ground for utility repairs. Non-silenced side mount hammers rigidly mount the power cell between two metal frames. This open configuration allows better access for serviceability.

POWER Where You Need It

Gets the job done quicker by delivering up to 1150 J (848 ft lb) of impact energy to the tool, whether you're working with concrete, rock, asphalt, permafrost or other similar materials.

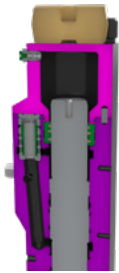
MAINTENANCE Made Easy

Designed to keep your hammer in the field instead of the shop with features such as single grease point, replaceable slip fit rotatable bearings, and a simple gas charging design.

RELIABILITY Built-in

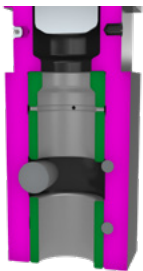
Gas-fired operating cycle delivers consistent, reliable performance. Our hammers only have two moving parts which makes them more reliable when breaking materials like non-reinforced concrete, asphalt and cinder block.

FEATURES



GAS FIRED DESIGN

Gas fired design delivers consistently high production over time making the breaker reliable in applications such as concrete, asphalt, rock and light trenching.



SLIP FIT BUSHINGS

Field replaceable and easy to maintain due to one locking pin, extending wear life and reducing owning and operating costs.



MAINTENANCE

All Cat hammers have easily accessible maintenance points.



STANDARD 2 YEAR WARRANTY

Standard 2 year warranty gives you piece of mind when purchasing a quality Cat hammer.



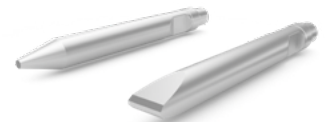
ERGONOMICALLY POSITIONED HYDRAULIC LINES

Designed to optimize serviceability, are easily accessible and require no special tools.



SIDE MOUNT STYLE HAMMERS

Side Mount style hammers provide more flexibility and are better suited for highway or construction breaking jobs. The reduced number of bolted joints also provides a more robust frame that increases hammer longevity.



STANDARD ITEMS INCLUDED WITH EACH HAMMER

- + Tool box with service items comes standard to help maintain the hammer.
- + Two tools, cone and crosscut/transverse chisel.

B SERIES SIDE MOUNT HAMMERS

AVAILABLE TOOLS

MOIL



A general purpose tool where the point improves speed of penetration. For use on pavement, concrete, bed rock, hard rock, and trenching.

CONE



A multi-use tool that can make circle holes in soft material. The point improves speed of penetration but there is no control of fracture direction. For use on concrete, bed rock, and hard rock.

BLUNT



The blunt tool helps shatter with vibration instead of penetration. For use on concrete, bed rock, trenching, operating on slopes, and cutting lines.

**CHISEL
(Cross Cut)**



Aids in creating a controlled and accurate fracture line. For use on pavement, concrete, bed rock, trenching, operating on slopes, and cutting lines.

**CHISEL
(Parallel)**



Aids in creating a controlled and accurate fracture line. For use on pavement, concrete, bed rock, trenching, operating on slopes, and cutting lines.

**SPADE
(Transverse)**



Used specifically for cutting asphalt and other soft materials, it is also good at cutting lines.

**SPADE
(Parallel)**



Used specifically for cutting asphalt and other soft materials, it is also good at cutting lines.

COMPACTION PLATE



Ideal for compacting soil, gravel and other materials.

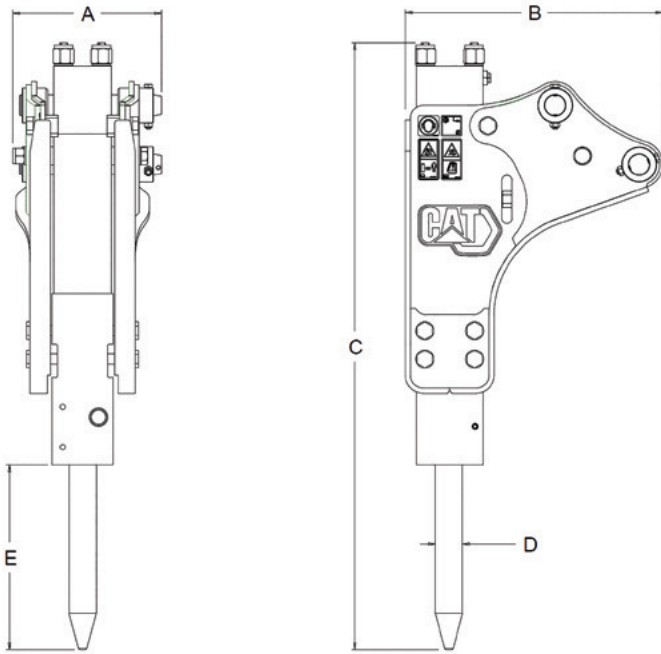
The tool box included with each hammer contains standard service items to help maintain the hammer.

Items included are:

- + NITROGEN CHARGE GAUGE
- + HAMMER PASTE TUBE
- + TOOL PIN
- + RETENTION SPRING PINS
- + OPERATION MAINTENANCE MANUAL
- + OTHER KEY SERVICE ITEMS.



SIDE MOUNT HAMMER SPECIFICATIONS



Model	B2	B4	B6	B8
A Width	217 mm 8.5 in	277 mm 10.9 in	355 mm 14 in	385 mm 15.2 in
B Length	391 mm 15.4 in	476 mm 18.7 in	671 mm 26.4 in	730 mm 28.7 in
C Height (with tool)	1076 mm 42.4 in	1182 mm 46.5 in	1353 mm 53.3 in	1484 mm 58.4 in
D Tool Diameter	45 mm 1.8 in	53 mm 2.1 in	68 mm 2.7 in	75 mm 3 in
E Tool Working Length	326 mm 12.8 in	360 mm 14.2 in	427 mm 16.8 in	468 mm 18.4 in
Energy Class	290 J 213.9 ft lb	370 J 272.9 ft lb	680 J 501.5 ft lb	1150 J 848.2 ft lb
Impact Frequency	700-1200 bpm	600-1100 bpm	500-900 bpm	400-800 bpm
Minimum Carrier Weight	1497 kg 3,300 lb	3000 kg 6,614 lb	3629 kg 8,000 lb	6350 kg 140,00 lb
Optimal Hydraulic Flow	20-30 L/min 5.3-7.9 gpm	25-50 L/min 6.6-13.2 gpm	40-70 L/min 10.6-18.5 gpm	50-90 L/min 13.2-23.8 gpm
Minimum Operating Pressure	88 bar 1,276.3 psi	102.9 bar 1,492 psi	122.4 bar 1,775 psi	117.5 bar 1,704 psi
Operating Weight (with tool)	123.6 kg 272.5 lb	148 kg 326.3 lb	255 kg 562.2 lb	351 kg 773.8 lb
Sound	128 dB(A)	128 dB(A)	128 dB(A)	133 dB(A)
Mounting Pin Diameters	30 mm 1.2 in	40 mm 1.6 in	45 mm 1.8 in	50 mm 2 in

For more complete information on Cat products, dealer services and industry solutions, visit us on the web at www.cat.com

AEHQ8378 (10-2021)
(Global)

© 2021 Caterpillar. All Rights Reserved.

Materials and specifications are subject to change without notice. Featured machines in photos may include additional equipment. See your Cat dealer for available options.

CAT, CATERPILLAR, LET'S DO THE WORK, their respective logos, "Caterpillar Corporate Yellow," the "Power Edge" and Cat "Modern Hex" trade dress as well as corporate and product identity used herein, are trademarks of Caterpillar and may not be used without permission.
www.cat.com www.caterpillar.com

