

VISIONLINK®

COMPLETE VISIBILITY TO MANAGE YOUR ENTIRE FLEET



petersoncat.com/cat-online-tools/visionlink



VISIONLINK[®] TECHNOLOGY

TURN DATA INTO ACTIONABLE INSIGHTS

Are you ready to take the guesswork out of fleet management? VisionLink[®] delivers easy-to-understand actionable insights to help you make informed decisions at every turn. Get the most out of your entire fleet - from one single, intuitive, and trusted application.



THE POWER TO TAKE ACTION

⊕ ENTIRE FLEET VISIBILITY

- + Get actionable data insights for all assets regardless of make.
- + Manage mixed OEM fleets via one interface.
- + Monitor owned, rented, or leased assets.

⊕ UP-TO-DATE ASSET TRACKING

- + Track location, operating hours, fuel levels, health issues, and overall utilization.
- + View work tool attachment locations across multiple worksites and measure working hours to predict the need for tool maintenance.

⊕ MAXIMIZE UPTIME

- + Monitor equipment health, fault codes, fluid analysis, and inspection due dates.
- + Reduce unplanned downtime with critical alerts.
- + Order parts and schedule service within the platform.

⊕ OPTIMIZE UTILIZATION

- + Manage according to projects, groups, or geofences.
- + Set utilization targets and monitor performance.
- + Make informed, data-based decisions to reduce operating costs.



BETTER DATA, BETTER DECISIONS

ELIMINATE GUESSWORK

VisionLink takes the guesswork out of fleet management with key insights to maximize performance - regardless of fleet size or equipment manufacturer.*

VisionLink delivers timely equipment data seamlessly to your desktop or mobile device from a convenient centralized solution. With interactive dashboards, VisionLink makes it easier for operations of all sizes to make informed decisions at every turn.

DESIGNED FOR FLEETS OF 1 TO 100+

To get started with VisionLink, activate the built-in hardware on new Cat equipment. For older Cat assets and other OEM brands, install Product Link™ devices or integrate data from existing OEM or third-party telematics providers using APIs.

With the ability to make informed decisions that lower costs, boost productivity, simplify maintenance, and enhance jobsite safety, you get more done in less time for less money.

Note: A VisionLink subscription is required for equipment data reporting. Availability may vary by region and model. Consult your Cat dealer for details.

** Data field availability can vary by equipment manufacturer.*

TAKE YOUR BUSINESS TO THE NEXT LEVEL:

- + 24/7 fleet monitoring
- + Streamline asset inspections
- + Simplify maintenance
- + Maximize fleet utilization and jobsite efficiency
- + Helps reduce fuel costs
- + Boost operator productivity
- + Helps enhance jobsite safety
- + Supports 3rd party and other OEM data providers
- + Integrate non-connected assets



HOW IT WORKS

DELIVER REAL BENEFITS



ONE-STOP SOLUTION

VisionLink is your one-stop platform for easy-to-understand data and actionable insights to optimize your assets across your entire fleet.



MOBILE APP

Stay on the go and manage your fleet - wherever you are. Pull up VisionLink on your desktop or mobile app for iPhone and Android users.



MIXED FLEET MANAGEMENT

Manage all your assets - regardless of brand. Connect to 3rd party and other OEM data providers or import OEM assets using Cat Product Link™ devices.



IN-APP SUPPORT

Navigate the app with confidence. VisionLink provides in-app help, FAQs, and tutorial videos to guide you on features and functions.



API CONNECTIONS

Application Programming Interfaces (APIs) allow VisionLink to connect with other software applications using ISO (AEMP 2.0) standards or custom APIs for more advanced data features such as geofences.



ONE INTEGRATED EXPERIENCE

VisionLink integrates with many Cat applications including - Cat Inspect, Cat S-O-SSM, Cat SIS2 (Service Information System), and parts.cat.com. Further integrations are planned.

APPLICATION DASHBOARDS

ACTIONABLE INSIGHTS AT-A-GLANCE

VISIONLINK® JOBSITE A001 RG

Home Needs Review 127 Assets Map Tasks Maintenance Health Utilization Asset Operation Manage

Search assets, make, model, etc

Assets - GEOMANAGER MS4

Request Service Buy Parts Assign Inspection Record Service

My Tasks (Next 7 days)

You have no tasks due or coming due in the next 7 days.

Maintenance

- Overdue: 8 services
- Due this week (Feb 20 to 26, 2023): 13 services
- Due next week (Feb 27 to Mar 5, 2023): 9 services
- Due next 30 days (Feb 21 to Mar 23, 2023): 53 services
- Due next 60 days (Feb 21 to Apr 22, 2023): 87 services

Quick Links

- VisionLink Productivity
- Dealer Service Portal
- Cat Remote Asset Monitoring
- Cat Remote Fleet Vision 2.0
- Cat MineStar Health Equipment...
- Data Visualization
- Google



HOME DASHBOARD

The Home dashboard is the VisionLink default landing page. It provides:

- A global search bar that lets you search for product families and groups in addition to assets, makes, and models.
- Easily access features such as requesting service, purchasing parts, assigning inspections, recording services, and jobsites.
- My Tasks shows tasks due within the next seven days, along with overdue tasks and tasks due today.
- Maintenance review gives quick access to overdue and upcoming maintenance for your fleet.
- Quick Links provide access to other Cat applications.

VISIONLINK® Filters Search assets JOBSITE A001 RG

Home Last Updated: 02/09/2023; 07:12 PM CST Data shown: Last 14 days

Needs Review 129

Health Issues 86 New

- 52 HIGH
- 35 MEDIUM

Maintenance 40 New

- 4 COMPLETED
- 8 OVERDUE
- 28 UPCOMING

Device Status 3 New

- 3 NOT REPORTING

Assets	Totals	Service Meter
VL399123 - CAT 730	66 New 42 HIGH 0 LOW	30,369.4 Hours 01/27/2023; 11:28 AM CST
US00348 VLX01321 - CAT 320	4 New 2 HIGH 0 LOW	813.6 Hours 02/23/2023; 01:35 PM CST
623K VLB00278 - CAT 623K	2 New 2 HIGH 0 LOW	408.2 Hours 02/23/2023; 08:29 AM CST
920 VL400215 - CAT 920-14	1 New 1 HIGH 0 LOW	53.3 Hours 02/23/2023; 10:23 AM CST
D5-17 VLA01111 - C...	1 New 1 HIGH 0 LOW	954.7 Hours 02/23/2023; 09:15 AM CST
D6XE VLC00324 - CAT D6...	1 New 1 HIGH 0 LOW	1,437.8 Hours 02/22/2023; 11:22 AM CST
US00347 VLN00345 - CAT 320...	3 New 0 HIGH 0 LOW	208.1 Hours 02/16/2023; 03:42 PM CST
M318 VL700156 - CAT M318	3 New 0 HIGH 0 LOW	144.4 Hours 02/23/2023; 11:17 AM CST
VL500081 - CAT 775L...	1 New 0 HIGH 0 LOW	1,223.8 Hours 02/23/2023; 08:29 AM CST
740 WAT... VL800047 - CAT 740-...	1 New 0 HIGH 0 LOW	482.4 Hours 02/23/2023; 06:14 AM CST
VLM900099 - CAT 994K	1 New 0 HIGH 0 LOW	10.8 Hours 02/15/2023; 04:55 PM CST

MONITOR YOUR ENTIRE FLEET 24/7:

- + Check out fault codes, fluid analysis, and inspections
- + Add notes and history for each asset
- + Assign tasks to complete pending issues
- + Review detailed inspection reports for assets
- + Order parts with direct integration with parts.cat.com
- + Request service from your local Cat Dealer



NEEDS REVIEW DASHBOARD

The Needs Review dashboard is the single place in VisionLink where you can see assets that require attention on a daily basis enabling you to plan any maintenance activities proactively.

Get an overview of asset health and maintenance issues to help keep your equipment running strong. You'll find information on fault codes, fluid analysis, inspections, and more to help eliminate downtime and prevent costly repairs. Utilize the in-application workflow (Tasks) to manage project assignments.

Configure the Needs Review dashboard to show just the events you want to see, allowing you to drill down quickly into individual instances requiring attention. Add asset status notifications (email, in-app, text) based on your preferences.

The screenshot displays the VISIONLINK Assets Dashboard. At the top, there are navigation elements like 'Filters', 'Search assets', and 'JOBSITE A001'. The main area is divided into a sidebar with navigation options (Home, Needs Review, Assets, Map, Tasks, Maintenance, Health, Utilization, Asset Operation, Manage) and a main content area. The main content area shows a list of assets with columns for 'Assets', 'Last Known Asset Status', 'Last Known Service Meter', and 'Last Known Location'. A detailed view of asset V1601270 is shown, featuring a timeline of events, a health status section, and a planned maintenance section.



ASSETS DASHBOARD

Take your equipment management to the next level with an overview of each asset in your fleet. The Assets dashboard provides in-depth information about individual asset status, hour meter, last known location, and more.

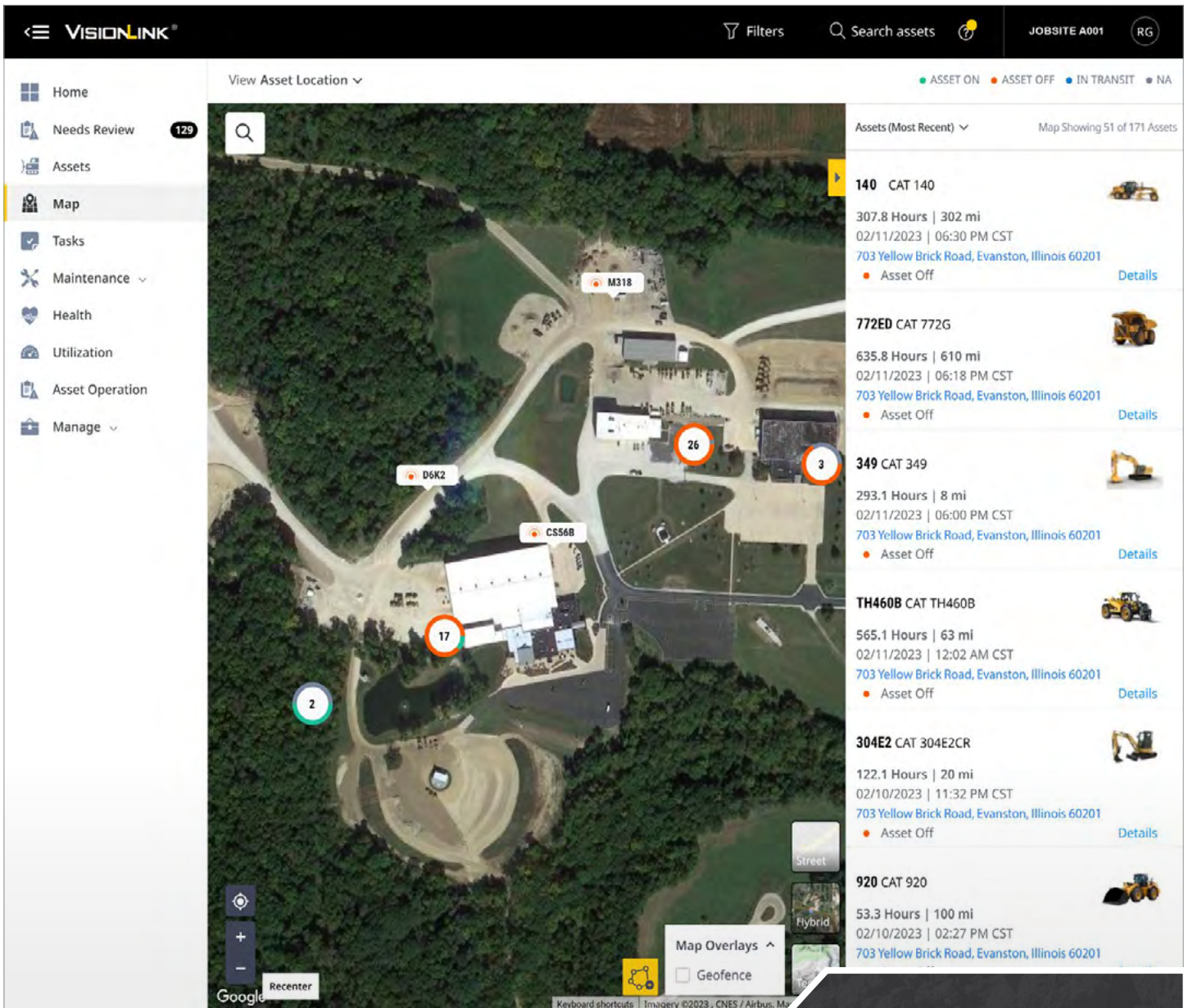
You can customize the Assets dashboard with the most relevant metrics for your fleet or browse over specific date ranges to get a timeline for each asset. Then dive deeper into a selected asset's details, displayed in a series of tabs from an easy-to-read Overview dashboard.

Some of the actions you can take within the page include:

- Download or schedule email reports in various formats (CSV, XLSX, JSON, XML).
- Add assets to a group or create a new group to organize your fleet.
- Show an asset location(s) in a map view over a selected date range.
- Edit asset details, including ID, hour meter, odometer, and ownership status.
- Buy parts directly from the Cat Parts Store (parts.cat.com).
- Request service from your local Cat dealer.

ASSETS LETS YOU VIEW AND TRACK:

- + Asset status
- + Service meter
- + Hour meter
- + Last reporting location
- + Next service
- + Ownership status - owned, rental, leased or sold
- + Fuel level percentage
- + DEF level percentage
- + Geofence locations
- + And more (customizable)



MAP DASHBOARD

Track all your asset's positions 24/7 using Google Maps functionality. The Map dashboard helps you visualize the current locations and statuses of assets in your fleet. It also provides a visual summary of fault codes, fluid analysis results, inspection results, and maintenance by asset location.

MAPS HELP YOU TO VISUALIZE:

- + Asset location
- + Fault code summary
- + Fault code locations
- + Fluid analysis
- + Inspections
- + Asset maintenance
- + Cat dealer locations
- + Geofence overlay

VISIONLINK® Filters Search assets JOBSITE A001 RG

Home Needs Review 129 Assets Map Tasks Maintenance Health Utilization Asset Operation Manage

All tasks Assigned to me

Show Completed Find Tasks Current Week (02/06/2023 - 02/12/2023) 1 - 7 of 7

Tasks	Assets	Task Status	Assignee	Task Due Date
<input type="checkbox"/> Fault Code : Armrest Raised While Steering Lock Switch I...	988KXEtest VLX00302 - C...	SCHEDULED	Wing Choi	02/13/2023
<input type="checkbox"/> Fault Code : Park Brake Disabled Due to System Fault	VL399123 - C...	UNDER REVIEW	Brandon Pickett	02/12/2023
<input type="checkbox"/> Fault Code : High Transmission Oil Temperature	VL399123 - C...	UNDER REVIEW	Jean Charles Cotte	02/12/2023
<input type="checkbox"/> Fault Code : Accumulator Gas Pressure Test Overdue	VL399123 - C...	UNDER REVIEW	Todd Farmer	02/12/2023
<input type="checkbox"/> Fault Code : Secondary Steering Pump Pressure Not...	VL399123 - C...	UNDER REVIEW	Salvador Galvez Gamez	02/12/2023
<input type="checkbox"/> Fault Code : Low Steering Pump Pressure	VL399123 - C...	UNDER REVIEW	Serena Janssen	02/12/2023
<input type="checkbox"/> Fault Code : Low Steering Pump Pressure	VL399123 - C...	UNDER REVIEW	Bina Sawani	02/12/2023
<input type="checkbox"/> Planned Maintenance : PM 1 (250 HOUR INTERVAL)	DS-17 VLA01111 - C...	SCHEDULED	Ramu Aitha	01/31/2023

Task Detail

DS-17 VLA01111 - CAT DS-17VP
142.5 Hours : 03/26/2022 : 03:34 PM CDT

Complete

Severity: Medium

Task Title: Planned Maintenance : PM 1 (250 HOUR INTERVAL)

Due Date: 01/31/2023 Assignee: Ramu Aitha

Notes

Attachments

Checklist and Parts

Buy Parts

Last Location: 61528, IL, United States (03/25/2022: 11:33 AM CDT)

Planned Maintenance

Next Service Needed: PM 1 PERFORM INITIAL (250 HOURS INTERVAL)

Due: 03/01/2023 (Due in 17 Days at 250 Hours 107 Hours)

Last Completed Service: No services completed

CENTRALIZED TASK MANAGEMENT:

View all task details including:

- + Asset information
- + Task status
- + Task assignee
- + Task due date
- + Task severity
- + Task creation date
- + Task creator
- + Download task reports

TASKS DASHBOARD

Task functionality enables people to be assigned to a project with a specific severity level and due date. Assigning tasks can enhance productivity and increase efficiency by monitoring an assignment from beginning to end, an essential part of managing your fleet.

The Tasks dashboard shows all tasks within your organization and those assigned to you. Tasks can be created in the Needs Review section for any instance - fault codes, fluid analysis, and inspections.

Some of the actions you can take within the page include:

- Filter by - all tasks, assigned to me, show completed.
- A date range can be applied to further filter the data on the screen.
- A search field is available to look for a specific task.

The screenshot displays the VisionLink Maintenance Dashboard. The main view is a table of assets with the following columns: Asset, Totals (3 Overdue, 0 Upcoming, 0 Completed), Projected Service Meter (1,475 Hours), and Location (Hyogo Pref., Ono City, Sugetac...). A detailed view for asset VL601270 is shown in a pop-up window, displaying maintenance schedules, service history, and a 'Request Service' button.



MAINTENANCE DASHBOARD

Say goodbye to unnecessary downtime and hello to simplified maintenance. The Maintenance summary dashboard gives you an overview of the maintenance needs for all assets managed within VisionLink.

The Maintenance feature streamlines scheduling maintenance and easily buying parts within the application. Maintenance contains two sub-pages:

- Summary is a view of scheduled services grouped by asset or by status.
- Settings and Enrollment are used to create and manage maintenance schedules and enroll assets to define new services.

MAKE MAINTENANCE EASY:

- + View maintenance summaries for all assets - fault codes, projected service meter, last reported location
- + Order parts with direct integration with parts.cat.com
- + Request service
- + View existing service requests
- + View a complete maintenance history for an asset
- + Download summary reports

VISIONLINK® Filters Search assets JOBSITE A001 RG

Home Needs Review 129 Assets Map Tasks Maintenance Health Utilization Asset Operation Manage

Fault Codes Fluid Analysis Results Inspection Results

Group by Assets Last 7 Days (02/04/2023 - 02/10/2023) Find fault codes 1 - 52 of 52

Assets	Service Meter	Totals	Activity
VL400099 - CAT 992...	201.5 Hours 02/10/2023; 04:16 PM CST	151 HIGH 1527 LOW	2275 MEDIUM
Test43122 VL399123 - CAT 730...	30,386 Hours 02/10/2023; 11:23 AM CST	26 HIGH 70 LOW	22 MEDIUM
VLC00186 - CAT 249D3	3,462 Hours 02/10/2023; 01:50 PM CST	24 HIGH 0 LOW	7 MEDIUM
Tjs Test ASset for Field VLS00032 - CAT 336	227.7 Hours 02/10/2023; 04:35 PM CST	15 HIGH 414 LOW	210 MEDIUM
VL800101 - CAT	3,314.3 Hours 02/10/2023; 07:37 AM CST	14 HIGH 66 LOW	60 MEDIUM
VL600156 - CAT 150...	208.4 Hours 02/10/2023; 04:50 PM CST	9 HIGH 7 LOW	12 MEDIUM
VLC99998 - CAT 120...	1,203.1 Hours 02/09/2023; 01:19 PM CST	6 HIGH 58 LOW	8 MEDIUM
MISCRT16 VLC00445 - CAT 627K	5,330.2 Hours 02/10/2023; 04:24 PM CST	3 HIGH 1 LOW	13 MEDIUM
VL500081 - CAT 775L...	2,818 Hours 02/10/2023; 01:22 PM CST	2 HIGH 83 LOW	116 MEDIUM
VLT99988 - CAT D6R...	43.9 Hours 02/10/2023; 05:42 AM CST	2 HIGH 13 LOW	3 MEDIUM
UP19273 VLS01301 - CAT 950M	3,940 Hours 02/10/2023; 04:54 PM CST	2 HIGH 20 LOW	2 MEDIUM
VLS00101 - CAT 637K	2,250.7 Hours 02/10/2023; 04:59 PM CST	2 HIGH 4 LOW	0 MEDIUM
VL299999 - CAT 120-14	33.3 Hours 02/10/2023; 03:51 PM CST	1 HIGH 118 LOW	46 MEDIUM
GR019 VL900111 - CAT 16GC	6,581.9 Hours 02/10/2023; 05:00 PM CST	1 HIGH 18 LOW	39 MEDIUM
CAT Owned FF VLO00078 - CAT 775...	4,648.6 Hours 02/10/2023; 04:58 PM CST	1 HIGH 20 LOW	10 MEDIUM
TTT L6 MRET 3 VLT99993 - CAT D6R...	1,517.7 Hours 02/10/2023; 02:24 PM CST	1 HIGH 7 LOW	0 MEDIUM
VL100102 - CAT	608.5 Hours 02/10/2023; 05:36 AM CST	1 HIGH 1 LOW	0 MEDIUM
	1,474.9 Hours	0 HIGH	19 MEDIUM

STAY UP-TO-DATE ON YOUR MACHINE HEALTH:

- + Summary of fault codes, fluid analysis, and inspection results
- + View information for previous days, date ranges or the current day
- + Review service histories for assets
- + Integrated with Cat S-O-SSM fluid analysis service and Cat Inspect App
- + View fault code details from the Cat SIS2 - Service Information System
- + Download health reports and inspection results

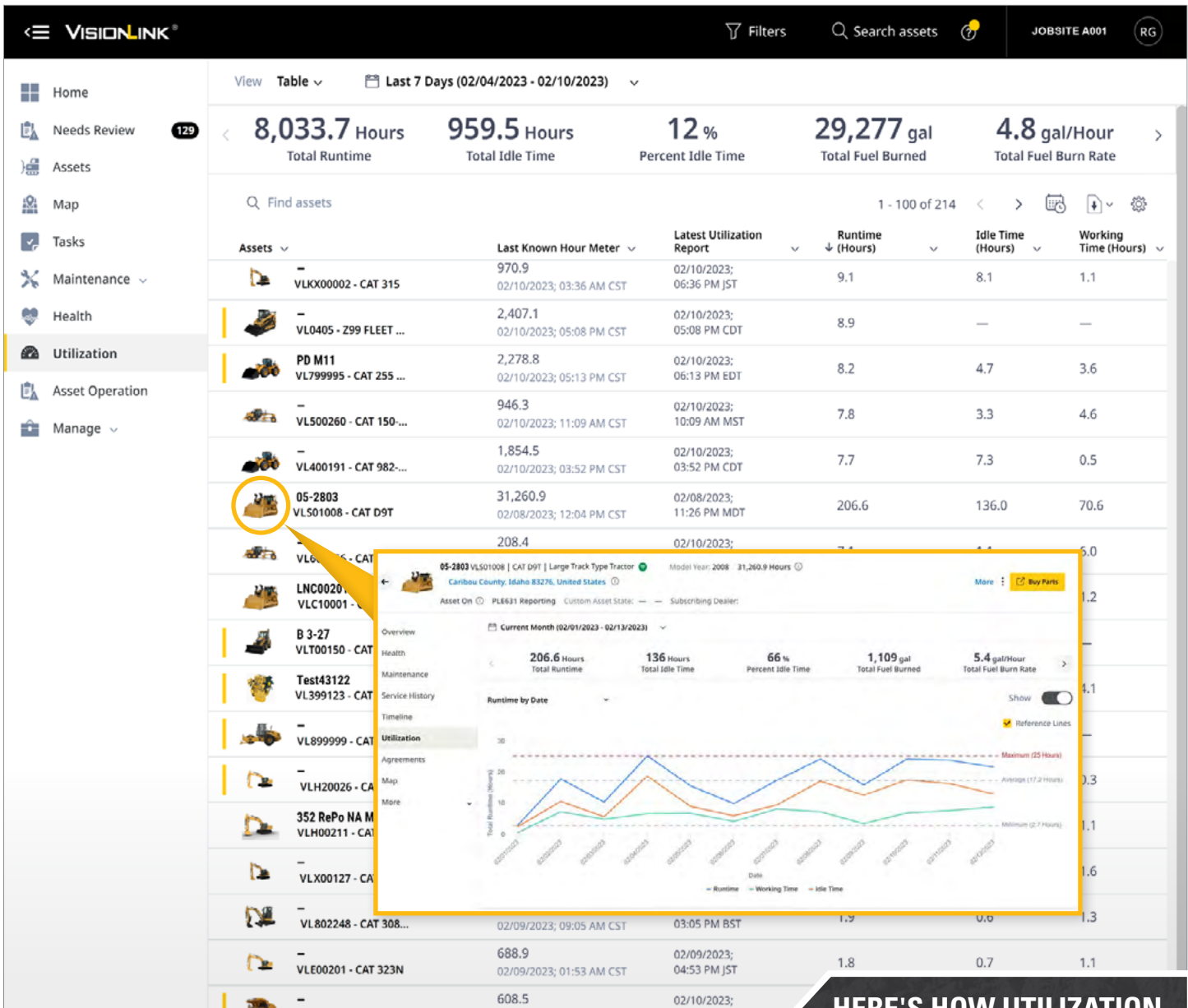


HEALTH DASHBOARD

Managing the health of your machines has never been easier. Fleet managers can use the Health dashboard to identify problems or opportunities when they happen. Catching and resolving issues as early as possible keeps the asset running and decreases the likelihood of additional problems, which can increase unplanned downtime and costly repairs.

The Health dashboard organizes fault codes and fluid analysis results on top of inspection information for each connected asset. Address instances of the event, including:

- Add, edit, and reply to notes.
- Add attachments (PNG, JPEG, GIF, TIFF, CSV, XLS, XLSX, DOC, DOCX, and PDF)
- Request service for your local Cat Dealer.
- Create a backlog item: a single-instance service associated with an existing service or scheduled on its own.



HERE'S HOW UTILIZATION CAN HELP IMPROVE MACHINE EFFICIENCY:

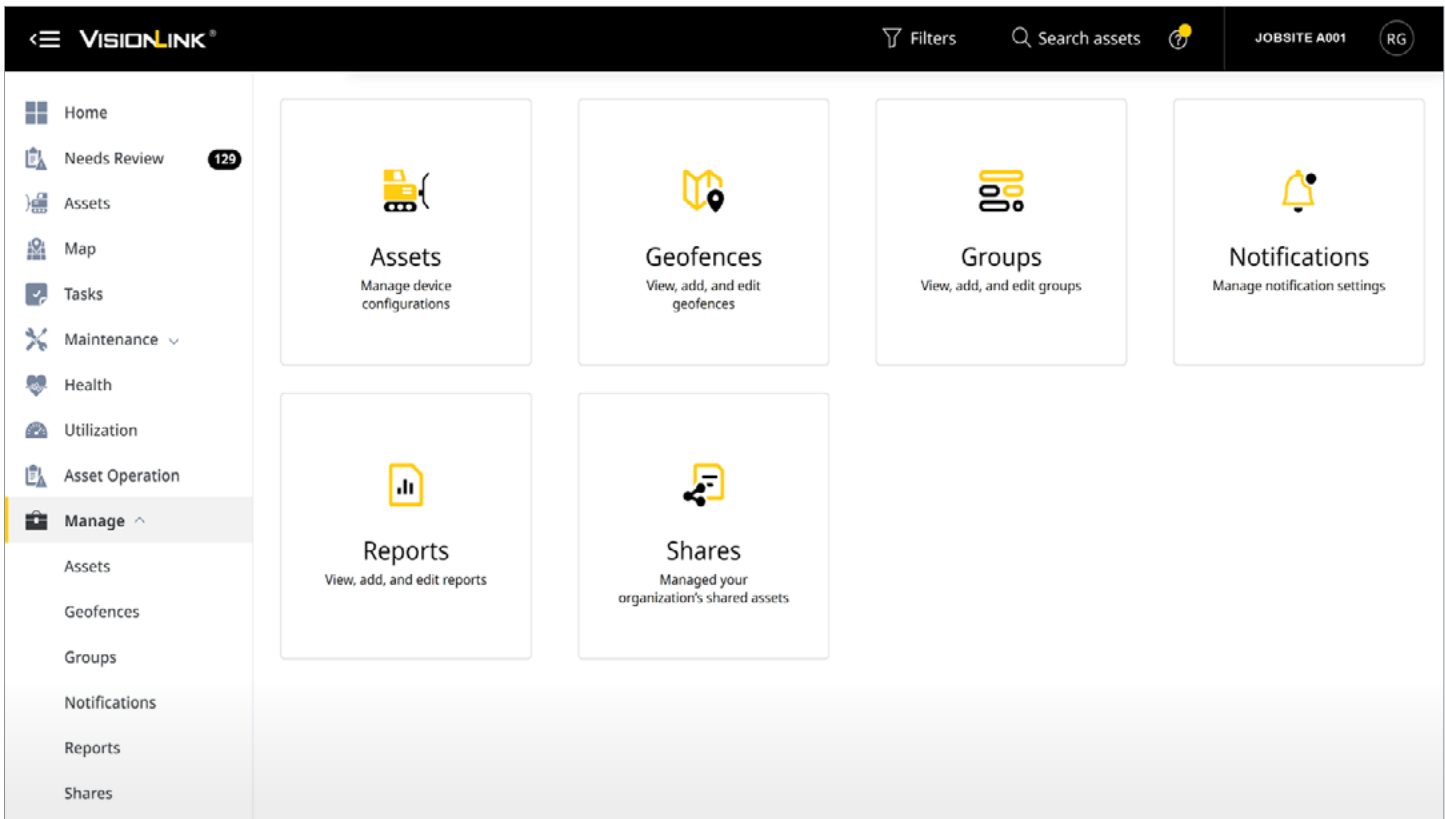
- + View fleet totals and individual assets
- + Identify data trends
- + Track fuel burn
- + Estimate CO₂ emissions*
- + Detect high idle time
- + Download or schedule email reports (CSV, XLSX, JSON, XML)
- + And more (customizable)



UTILIZATION DASHBOARD

The Utilization dashboard provides a high-level overview of idle time percentages, runtime hours, and other metrics related to machine performance. Data is visualized in chart and table formats to make identifying trends, outliers, and patterns easier to spot, making asset and fleet utilization optimizations easier than ever.

* Asset CO₂ emissions calculated by fuel type for the Total Fuel Burned each day in the selected date range:
 + Diesel (default) - 22.2 lbs per gallon or 2.6 kg per liter of fuel burned each day
 + Gasoline - 9.4 lbs per gallon or 2.3 kg per liter of fuel burned each day



MANAGE DASHBOARD

VisionLink administrative tools are organized by categories within the Manage dashboard and can be modified based on a user's permission level. Category sub-pages include:

- **Assets** - Manage the hour meter and odometer settings of each asset and set the end-of-day reporting parameters.
- **Geofences**- Create custom map boundaries to track and report assets based on your business needs.
- **Groups**- Organize your fleet in ways that make sense to your organization.
- **Notifications** - Add, edit or remove notification alerts from a list of available system categories. Anything that meets your criteria will become a Needs Review item.
- **Reports** - Schedule reports based on fault code, fleet fuel, fleet usage, or fluid analysis.
- **Shares** - Configure and share temporary views of asset data with another organization while retaining ownership of the asset.
- **Users** - Manage who can access VisionLink and how they can use VisionLink data.



"The VisionLink platform is a great asset for the business and for the fleet and helps us better manage the fleet to minimize downtime, maximize efficiencies and utilization, minimize our fuel burn, watch our idle hours. And so, it's a great tool to provide us the information we need to make decisions to more efficiently run our business."

ANTHONY GUHO
GUHO CONSTRUCTION
BOISE, ID USA



TECHNICAL REQUIREMENTS

HOW TO GET CONNECTED

AVAILABLE ON THE FOLLOWING

VisionLink can be used with new and legacy Cat equipment and other OEM machines.

Work smarter, faster, and safer with VisionLink. Easy-to-understand data and actionable insights give you the power to make informed decisions for your business at every step.

Take your equipment management to the next level and see the potential for increased profitability and reduced operating costs.

Ready for simplified and valuable data for your fleet? Contact your local Cat dealer for more information.

STEPS TO GET STARTED

1. CONTACT YOUR CAT DEALER

To ensure successful integration of VisionLink, consult with your Cat dealer during the setup process.

2. CONNECT YOUR ASSETS

For new Cat equipment, activate the built-in hardware. For older Cat assets and other OEM brands, install Product Link™ devices or integrate data from existing OEM or third-party telematics providers using APIs.

3. CHOOSE A SUBSCRIPTION

Obtain a VisionLink subscription (per machine). Your Cat Dealer can help determine the best subscription to fit your business needs.

4. IMPLEMENT CHANGE MANAGEMENT

Utilize data-driven insights by educating users on the platform and implementing change management.

API INTEGRATIONS

VisionLink can consume and visualize data from other OEM and third-party telematics providers by integrating their application programming interfaces (APIs) utilizing ISO (AEMP 2.0) standards. This integration allows you to consolidate full fleet telematics in a single asset management application. Supported providers include:

OEM:

+ Bell-Fleetmatic	+ Hyundai	+ Liebherr
+ BOMAG	+ JCB	+ Senquip
+ CNH Industrial	+ JLG	+ Tadano
+ Genie Lift Connect	+ John Deere	+ Takeuchi
+ GEOTrac	+ KOBELCO	+ Volvo
+ Hitachi	+ Komatsu	+ WIRTGEN

THIRD-PARTY TELEMATICS PROVIDERS:

+ Geotab	+ Powerfleet
+ Globalstar	+ Trackunit
+ LHP	+ Trimble GeoManager
+ MachineMax	+ ZTR



VISIONLINK MOBILE APP

The VisionLink mobile application brings the power of asset management into the palm of your hand. The mobile app allows you to access data on the go and in the field. Stay updated on key metrics, location of assets, fuel levels, and more through your mobile device.

Available for Android and iOS.



petersoncat.com/cat-online-tools/visionlink

petersoncat.com/cat-online-tools/visionlink



For more complete information on Cat products, dealer services and industry solutions, visit us on the web at www.cat.com.

P45_0823 © 2023 Caterpillar. All Rights Reserved. PEDJ0565-02 (02-2023) (Global)

Materials and specifications are subject to change without notice. Featured machines in photos may include additional equipment. See your Cat dealer for available options.

CAT, CATERPILLAR, LET'S DO THE WORK, VisionLink, their respective logos, "Caterpillar Corporate Yellow," the "Power Edge" and Cat "Modern Hex" trade dress as well as corporate and product identity used herein, are trademarks of Caterpillar and may not be used without permission.

www.cat.com www.caterpillar.com