



313D, 313D2 & 315D HYDRAULIC EXCAVATORS PARTS REFERENCE GUIDE

LET'S DO THE WORK.™




PROTECT YOUR INVESTMENT WITH GENUINE CAT® PARTS

Thank you for selecting the Cat® 313D/315D Hydraulic Excavator.

This guide is designed to provide you with a quick reference for the parts and part numbers you need to keep your Cat 313D/315D Hydraulic Excavator running at peak efficiency.



MAINTENANCE

Proactive preventative maintenance extends the life of your machine and protects your investment. Only Caterpillar knows Cat equipment's filtration and lubrication requirements and offers parts kits to match your machine's maintenance cycles.

| SCHEDULED MAINTENANCE PARTS | |
|---|---------------------------------|
|  | GREASES |
| | PLANNED MAINTENANCE KITS |

REPLACEMENT PARTS

Proper maintenance minimizes the need for repair and replacement. In the event that replacement parts are required, the use of genuine Cat parts helps maximize machine performance and maintains high resale value.

| WEAR PARTS | |
|--|--|
|  | GROUND ENGAGING TOOLS |
| | UNDERCARRIAGE |
| | PINS AND BUSHING |
| REPAIR PARTS | |
|  | CAB GLASS |
| | HOODS/DOORS/CAPS |
| | CAB ACCESSORIES, MIRRORS AND LIGHTS |
| | BUMPERS AND GUARDS |
| | ENGINE PARTS |
| | CYLINDER PARTS |
| | PUMPS & MOTORS |
| HYDRAULIC CYLINDERS | |

GREASES

| | STANDARD MAINTENANCE GREASES | | |
|------------------------------|----------------------------------|----------------------------------|------------------------------|
| Previous Cat Product Name | Cat Ultra 5 Moly #1 | Cat Ultra 5 Moly #2 | Cat Advanced 3 Moly |
| Current Cat Product Name | Cat Extreme Application Grease 1 | Cat Extreme Application Grease 2 | Cat Prime Application Grease |
| Grade (NLGI) | 1 | 2 | 2 |
| Melting point (deg C) | 260 | 260 | 260 |
| Ambient Temperature (deg C) | -35 to +40 | -30 to +50 | -20 to +40 |
| Base Oil Type | Mineral | Mineral | Mineral |
| Color | Dark Gray | Dark Gray | Dark Gray |
| Cartridge (390 g / 14 oz) | 452-5996 | 452-6001 | 452-6006 |
| Plastic Pail (5 kg / 11 lb) | - | - | - |
| Plastic Pail (16 kg / 35 lb) | 452-5999 | 452-6004 | 452-6009 |
| Keg (55 kg / 120 lb) | 452-5998 | 452-6003 | 452-6008 |
| Drum (180 kg / 400 lb) | 452-5997 | 452-6002 | 452-6007 |

| GREASES FOR UNIQUE APPLICATIONS AND ENVIRONMENTS | | | |
|--|---|--------------------|--|
| Cat Arctic Platinum | Cat Desert Gold | Cat Multipurpose | Hammer Paste |
| Cat Extreme Application Grease - Arctic | Cat Extreme Application Grease - Desert | Cat Utility Grease | |
| 0 | 2 | 2 | 2 |
| 230 | 280 | 260 | 230 |
| -35 to +40 | -30 to +50 | -30 to +40 | -20 to +1100 |
| Semi-Synthetic | Mineral | Mineral | Mineral |
| Dark Grey | Dark Grey | Blue | Bronze |
| 508-2184 | 452-6016 | 452-6011 | 130-6951 (standard) 317-8491 (autolube) |
| - | - | - | 133-8807 |
| 508-2187 | 452-6019 | 452-6014 | - |
| 508-2186 | 452-6018 | 452-6013 | - |
| 508-2185 | 452-6017 | 452-6012 | - |



PLANNED MAINTENANCE KITS

| EXCAVATOR | | A | | | | |
|-------------|---------------|--------------------------|----------------------|--------------------|-------------------|-----------------|
| | | Engine Oil/Filter Change | | Fuel Filter Change | Lubricate Machine | Water Separator |
| Sales Model | Serial Number | Filter Element | Oil Qty (L) DEO-ULS™ | Primary Element | Grease Adv 3Moly | Element |
| 313D | GAP | 322-3155 | 13.5 | 1R-1804 | 5P-0960 | 438-5386 |
| 313D2 | RXZ | 1R-1807 | 16 | | | – |
| | SYG | 322-3155 | 13.5 | 1R-1804 | 452-6006 | – |
| | LCY | | | | | 438-5386 |
| 315D | CJN | 1R-0739 | 17.5 | 1R-0751 | | 326-1644 |

| EXCAVATOR | | B | | C | | | |
|-------------|---------------|------------------------------|-----------------------|-------------------|-----------------------------|-------------------------|------------------------------------|
| | | Hydraulic Oil Filter (Pilot) | Case Drain Oil Filter | AC Receiver Dryer | Hydraulic Oil/Filter Change | | Final Drive Oil Change (Each Side) |
| Sales Model | Serial Number | Filter AS | Element | Accumulator Group | Filter Element | Oil Qty (L) Gydo Adv 10 | Oil Qty (L) GO |
| 313D | GAP | 5I-8670 | 093-7521 | 176-1902 | 398-7171 | 104 | 3 |
| 313D2 | RXZ | | | | – | 86 | |
| | SYG | | | | 398-7171 | 104 | |
| | LCY | | | | 266-7796 | 106 | |
| 315D | CJN | | | | | | 5 |

| EXCAVATOR | | WHEN REQUIRED | | | |
|-------------|---------------|-----------------|-------------------|-------------------|-----------------------|
| | | Air Filter | | Cabin Air | |
| Sales Model | Serial Number | Primary Element | Secondary Element | Fresh Air Element | Recirculating Element |
| 313D | GAP | 131-8902 | 110-6331 | 293-1184 | 245-7823 |
| 313D2 | RXZ | | | 293-1183 | |
| | SYG | | | 293-1184 | |
| | LCY | | | | |
| 315D | CJN | 135-5788 | 135-5787 | 293-1183 | 293-1137 |

| PARTS MAINTENANCE KITS | | | | |
|------------------------|------|---|---|---|
| MACHINE HOURS | 500 | A | | |
| | 1000 | A | B | |
| | 1500 | A | | |
| | 2000 | A | B | C |
| | 2500 | A | | |
| | 3000 | A | B | |
| | 3500 | A | | |
| | 4000 | A | B | C |
| | 4500 | A | | |
| | 5000 | A | B | |
| | 5500 | A | | |
| | 6000 | A | B | C |

UNDERCARRIAGE

| Machine Model | | Undercarriage | | | |
|---------------|-----------------|---|-----------|--|--|
| Sales Model | Serial # Prefix | Rollers | Sprockets | Steel Track Assembly | Steel Track Shoe |
| 313D GC | GAP | 396-3754 (Carriage) 459-5714 (Single Flange) | 4I-7472 | 446-5068 500 mm, Triple Grouser Shoe, Grease Lubricated Track | 137-6114 (Shoe) 4I-7538 (Bolt) 5I-6125 (Nut) 445-0555 (Link As) |
| 312D2-GC | RXZ | 4I-7345 (Carriage) 248-7259 (Single Flange) | | 176-4863 500 mm, Triple Grouser Shoe | 137-6114 (Shoe) 4I-7538 (Bolt) 5I-6125 (Nut) 176-4870 (Link As) |
| 313D2-GC | SYG | 396-3754 (Carriage) 459-5714 (Single Flange) | | 446-5068 500 mm, Triple Grouser Shoe, Grease Lubricated Track | 137-6114 (Shoe) 4I-7538 (Bolt) 5I-6125 (Nut) 445-0555 (Link As) |
| 313D2 L | LCY | | | 446-5069 500 mm, Triple Grouser Shoe | |
| 315D | CJN | 8E-5600 (Carriage) 163-4143 (Single Flange) (CJN1-2651) 423-3580 (Single Flange) (CJN2652 & up) | 8E-9805 | 176-4852 600 mm, Triple Grouser Shoe | 126-5062 (Shoe) 9W-3619 (Bolt) 9W-3361 (Nut) 194-1134 (Link As) |

CAB GLASS

| Machine Model | | Cab Glass | | | | |
|---------------|-----------------|--|----------------------|----------------------|----------------------------------|--|
| Sales Model | Serial # Prefix | Front Window, Upper | Front Window, Lower | Door Window | Side & Rear Window | |
| 313D | GAP | 388-9109 | 388-9108 | 384-6533 | 388-9107 | |
| 313D2 | RXZ | 207-0144 388-9117 388-9116 171-7503 388-9109 | 388-9108 176-1958 | 151-6792 384-6533 | 235-8909 388-9107 | |
| | SYG | 388-9117 388-9116 388-9109 | 388-9108 | 384-6533 151-6792 | 388-9107 | |
| | LCY | 388-9117 388-9116 388-9109 | 388-9108 | 384-6533 151-6792 | 388-9107 | |
| 315D | CJN | 207-0144 171-7503 | 176-1958 156-6647 | 151-6792 | 235-8909 235-8915 185-8203 | |

GET BUCKET TEETH

| Description | HD J-Series | | GD J-Series | | Cat® Advansys™ | |
|-------------------------------------|-------------|----------|-------------|----------|----------------|-------------|
| | J250 | J300 | J250 | J300 | Advansys 70 | Advansys 80 |
| Penetration Plus | | 195-9180 | | 450-7556 | 539-5673 | 505-4083 |
| General Duty | | | | | 539-6778 | 505-4086 |
| Heavy Duty | | | | | | 505-3982 |
| Heavy Duty Long Life (ARM) | | | | | | 505-3983 |
| Leveling Edge Conversion (LEC) | | | | | | 505-3985 |
| Wide | 101-2927 | 4t-2215 | | | | 505-4080 |
| Penetration | 100-6462 | 3G-3237 | | | | 505-4081 |
| Penetration Long Life (ARM) | | | | | | 505-4082 |
| Spike | | | | | | 505-4084 |
| Abrasion, Heavy Duty | 8E-3755 | 8E-3756 | | | | |
| Long | 9J-3169 | 9J-3167 | 449-2156 | 449-2159 | | |
| Long, Heavy Duty | 8E-3750 | 8E-3751 | | 449-2160 | | |
| Short | 9J-3178 | 9J-3175 | | | | |
| Twin Sharp | 229-7137 | | | | | |
| Standard | | | 539-5657 | 539-5658 | | |
| Pin | | 132-4766 | | | | |
| Retainer | | 149-5733 | | | | |
| Retention Kit (Incl Pin & Retainer) | | | 539-5726 | 539-5736 | | |

HOODS/DOORS/CAPS

| Machine Model | | Hoods/Doors/Caps | | | | | |
|---------------|-----------------|----------------------|----------------------|----------------------------------|-------------------|-----------------|----------------------------------|
| Sales Model | Serial # Prefix | Engine | Air Cleaner, Battery | Radiator Access | Radiator Fill Cap | Hydraulic Tanks | Pump Compartment |
| 313D | GAP | 484-8682 492-9266 | 436-2801 | 436-2801 | 416-0965 | 520-9419 | 436-2800 |
| 313D2 | RXZ | 394-9448 | 436-2801 | 436-2801 | 416-0965 | 384-9067 | 436-2800 |
| | SYG | 464-8682 | 490-9266 | 490-9266 | 171-3369 | 520-9419 | 436-2800 |
| | LCY | 464-8682 | 490-9266 | 490-9266 | 171-3369 | 520-9419 | 436-2800 |
| 315D | CJN | 268-0664 313-8128 | 268-0670 366-6334 | 268-0679 268-0670 366-6334 | 245-9212 | — | 268-0643 268-0699 375-8704 |

ACCESSORIES/MIRRORS/LIGHTS

| Machine Model | | Accessories/Mirrors/Lights | | | | |
|---------------|-----------------|----------------------------|---------------------------|----------------------|----------------------|----------------------------------|
| Sales Model | Serial # Prefix | Window Wiper, Front Upper | Window Wiper, Front Lower | Visors | Mirrors | Lighting |
| 313D | GAP | 436-1116 | — | — | 142-3836 | 291-7762 275-7052 |
| 313D2 | RXZ | 234-6594 436-1116 | — | — | 142-3836 | 366-9343 291-7762 275-7052 |
| | SYG | 436-1116 | — | — | 142-3836 | 441-6375 291-7762 275-7052 |
| | LCY | 436-1116 | — | — | 142-3836 | 441-6375 291-7762 275-7052 |
| 315D | CJN | 234-6594 | 273-5389 | 161-3750 161-3751 | 142-3836 489-5117 | 366-9343 291-7730 295-5163 |

ENGINE PARTS

| Machine Model | | Engine Parts | | | | | | | | |
|---------------|-----------------|------------------------|---|------------|------------|------------------------|-------------------|--------------|------------------------|-----------|
| Sales Model | Serial # Prefix | Starter Motor | Battery | Alternator | Water Pump | Fuel Injector Pump | Fuel Priming Pump | Turbocharger | Fuel Injector | Glow Plug |
| 313D | GAP | 357-5205 | 3T-5760 (Maintenance Free) | 424-6821 | 355-2252 | 465-6106 | — | 484-9402 | 315-3381 | 462-2238 |
| 313D2 | RXZ | 225-3150 | 3T-5760 (Maintenance Free) | 424-6821 | 225-8016 | 248-2366 | 299-9265 | 237-4734 | 236-1674 * 20R-0471 | 462-2238 |
| | SYG | 357-5205 | 3T-5760 (Maintenance Free) | 560-6109 | 485-4894 | 375-2647 * 20R-4562 | 390-6840 | 482-0233 | 449-3315 | 462-2235 |
| | LCY | 357-5205 | 263-9574 (Cold Weather) 3T-5760 (Maintenance Free) | 424-6821 | 355-2252 | 465-6106 | — | 484-9402 | 315-3381 | 462-2238 |
| 315D | CJN | 294-1857 * 10R-7586 | 263-9574 (Cold Weather) 3T-5760 (Maintenance Free) | 125-2994 | 296-4655 | 358-9085 | 390-4679 | 310-9695 | 326-4740 * 10R-7676 | — |



*Reman Parts

CYLINDER PARTS

| Machine Model | | Cylinder Parts | | |
|---------------|-----------------|--------------------------------|----------------------------------|----------------------------------|
| Sales Model | Serial # Prefix | Boom | Stick | Bucket |
| | | Lines Group | Lines Group | Lines Group |
| 313D | GAP | 385-2827 (LH) 385-2835 (RH) | 385-2830 | 385-2833 |
| 313D2 | RXZ | | | |
| | SYG | | | |
| | LCY | | | |
| 315D | CJN | 179-7644 (LH) 179-7645 (RH) | 266-1187 320-0199 385-2914 | 131-9878 131-9879 385-2916 |

BUMPERS & GUARDS

| Machine Model | | Vandal Guards | Falling Object Guards (FOGS) | Backup Alarm | Rear View Camera |
|---------------|-----|---|------------------------------|--------------|------------------|
| 313D | GAP | - | - | 251-4162 | - |
| 313D2 | RXZ | - | - | - | - |
| | SYG | - | - | - | - |
| | LCY | - | - | - | - |
| 315D | CJN | 207-0176 (Top Front) 207-0164 (Middle Front) 207-0167 (Bottom Front) 207-0170 (Top Door) 207-0173 (Bottom Door) | 484-8798 | 213-9100 | 251-4162 |

PUMPS & MOTORS

| Machine Model | | Head Pump | AUX Pump | Swing Motor | Travel Motor |
|---------------|-----|---------------------|----------|--------------------------------------|-------------------------|
| 313D | GAP | 391-9444 | - | 422-9182 * 20R-8804 | 509-5929 (S/N 1-Up) |
| 313D2 | RXZ | 391-9444 | - | 422-9182 (S/N 1144-Up) * 20R-8804 | 509-5929 (S/N 226-Up) |
| | | | - | 421-4382 (S/N 421-4381) | |
| | - | 170-9893 (S/N 1-Up) | | | |
| | SYG | 391-9444 | - | 422-9182 * 20R-8804 | 509-5929 |
| | LCY | 391-9444 | - | 422-9182 * 20R-8804 | 509-5929 (S/N 10392-Up) |
| 315D | CJN | 267-8088 | 342-1891 | 204-2814 (S/N 1-2439) | 185-6953 |
| | | | | 364-0978 (S/N 2440-2815) | |
| | | | | 369-9624 (S/N 2816-Up) | 197-7180 |
| | | | | | 209-5992 * 10R-2154 |

*Reman Part

CYLINDER PARTS

| Machine Model | | Cylinder Parts | | | |
|---------------|-----------------|--|--|--|--|
| Sales Model | Serial # Prefix | Boom | Stick | Bucket | |
| | | Tube \ Rod \ Seal Kit | Tube \ Rod \ Seal Kit | Tube \ Rod \ Seal Kit | |
| 313D | GAP | 390-4188 (tube) 390-4189 (Rod) 393-7887 (seal kit) | 390-4202 (tube) 390-1093 (rod) 393-7949 (seal kit) | 390-4219 (tube) 390-4220 (rod) 390-4227 (seal kit) | |
| | RXZ | | | | |
| 313D | SYG | | | | |
| | LCY | | | | |
| 315D | CJN | 385-2860 (tube) 385-2861 (rod) 385-2908 (seal kit) | 539-7996 (tube) 385-2863 (rod) 385-2942 (seal kit) | 385-2864 (tube) 385-2865 (rod) 385-2946 (seal kit) | 289-8114 (tube) 266-7879 (rod) 179-9638 (seal kit) |
| | | | 539-7996 (tube) 385-2863 (rod) 385-2942 (seal kit) | 266-7875 (tube) 266-7879 (rod) 179-9638 (seal kit) | 289-8122 (tube) 266-7885 (rod) 322-8753 (rod) 179-9625 (seal kit) |
| | | | 266-7862 (tube) 289-8109 (rod) 266-7874 (seal kit) | 266-7813 (tube) 266-7885 (rod) 322-8753 (rod) 179-9625 (seal kit) | 341-2822 (tube) 302-1738 (rod) 179-9625 (seal kit) |
| | | | 289-8104 (tube) 289-8109 (rod) 266-7874 (seal kit) | 281-8980 (tube) 281-8984 (rod) 179-9638 (seal kit) | 342-1898 (tube) 342-1897 (rod) 179-9625 (seal kit) |

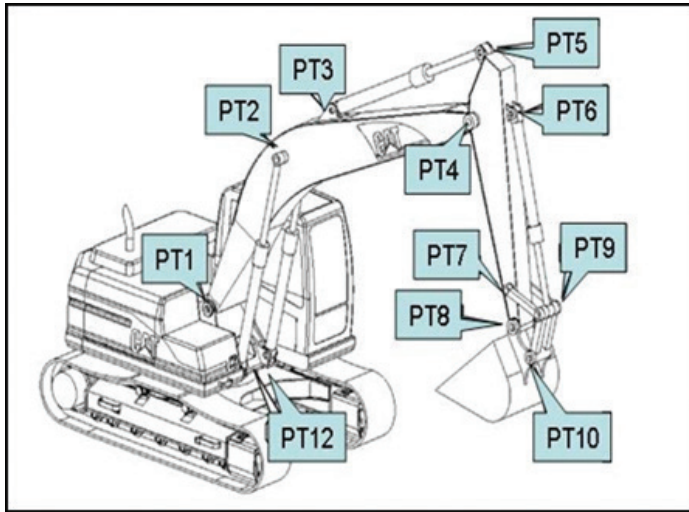
KITS

Kits are not available through parts.cat.com. Please contact your local Cat Dealer.

| Machine Model | | Kits | |
|---------------|-----------------|--------------------------------|------------|
| Sales Model | Serial # Prefix | Description | Kit Number |
| 313D | GAP | Ashtray with 90 Degree Opening | 178-5530 |
| | | Ashtray with Singe Hole | 259-7202 |
| | | Back Up Alarm | 213-9100 |
| | | Seat Belt, 2 in (50.8 mm) Wide | 490-5979 |
| | | Seat Belt, 2 in (50.8 mm) Wide | 488-6524 |
| | | Seat, High Back, no Head Rest | 333-4160 |
| 313D2 | RXZ | Ashtray with 90 Degree Opening | 178-5530 |
| | | Ashtray with Singe Hole | 259-7202 |
| | | Back Up Alarm | 213-9100 |
| | | Seat Belt, 2 in (50.8 mm) Wide | 488-6524 |
| | | Seat, High Back, no Head Rest | 333-4160 |
| | | Swivel Guard, Standard | 471-1997 |
| 313D2 | SYG | Seat Belt, 3 in (76.2 mm) Wide | 488-6525 |
| | | Swivel Guard, Standard | 471-1997 |

| Machine Model | | Kits | |
|---------------|-----------------|-------------------------------------|------------|
| Sales Model | Serial # Prefix | Description | Kit Number |
| 315D | CJN | Ashtray Kit with 90 Degree Opening | 178-5530 |
| | | Ashtray with Singe Hole | 259-7202 |
| | | Back Up Alarm | 213-9100 |
| | | Camera, Rear View, with Accessories | 251-4162 |
| | | Seat, High Back with Head Rest | 245-7884 |
| | | Seat, High Back, Heat, Headrest | 423-6161 |
| | | Seat, High Back, no Head Rest | 333-4160 |
| | | Seat, High Back, no Head Rest | 333-4172 |
| | | Seat, Low Back, no Head Rest | 327-6639 |
| | | Swivel Guard | 471-1985 |
| | | Vandal Guard, Bottom Door | 207-0173 |
| | | Vandal Guard, Bottom Front | 207-0167 |
| | | Vandal Guard, Middle Front | 207-0164 |
| | | Vandal Guard, Top Door | 207-0170 |
| | | Vandal Guard, Top Front | 207-0176 |
| | | Vandal Guard, Top Front | 207-0161 |

EXCAVATOR LINKAGE CONFIGURATION



| Name | Location |
|------|--------------------------|
| PT1 | Boom foot |
| PT2 | Boom cylinder |
| PT3 | Stick cylinder |
| PT4 | Boom nose or Stick pivot |
| PT5 | Stick cylinder |
| PT6 | Bucket cylinder |
| PT7 | Idler link stick end |
| PT8 | Stick nose |
| PT9 | Bucket cylinder |
| PT10 | Power link bucket end |
| PT12 | Boom cylinder |



| LINKAGE PIN PART NUMBERS | | | | | | | | | | | | |
|--------------------------|--------|------------------------------------|-----------------------|-------------------------|------------------------------------|------------------------|-----------------------------------|---------------------------|--------------|---------------------------|-----------------------|---------------------------|
| Sales Model | Prefix | PT1 | PT2 | PT3 | PT4 | PT5 | PT6 | PT7 | PT8 | PT9 | PT10 | PT12 |
| | | Boom Foot | Boom Cylinder Rod End | Stick Cylinder Head End | Boom Nose or Stick Pivot | Stick Cylinder Rod End | Bucket Cylinder Head End | Idler Link Stick End | Stick Nose | Bucket Cylinder Rod End | Power Link Bucket End | Boom Cylinder Head End |
| 313D | GAP | 348-0629 Pin Assembly | 172-3080 Pin | 1R-6225 Pin Assembly | 086-0523 Pin | 1R-6225 Pin Assembly | 127-3913 Pin Assembly | 71-6843 Pin | 086-0523 Pin | 248-7820 Pin | 086-0523 Pin | (2) 1R-6229 Pin Assembly |
| 313D2 | RXZ | | | | | | | | | | | |
| | SYG | | | | | | | | | | | |
| | LCY | | | | | | | | | | | |
| 315D | CJN | 267-0061 Pin Assembly (Reach) | 180-7755 Pin | 4I-4811 Pin Assembly | 267-0060 Pin Assembly (Reach) | 4I-4811 Pin Assembly | 107-9852 Pin Assembly (Reach) | 458-0543 Pin (Reach) | 106-6878 Pin | 458-0545 Pin (Reach) | 106-6878 Pin Assembly | (2) 107-9739 Pin Assembly |
| | | 303-8860 Pin Assembly (Long Reach) | | | 303-8863 Pin Assembly (Long Reach) | | 4I-4811 Pin Assembly (Long Reach) | 106-6877 Pin (Long Reach) | 106-6878 Pin | 106-6876 Pin (Long Reach) | 106-6878 Pin | |

Separate Configurations - Reach, Long Reach

BUSHING & BEARING PART NUMBERS

| Sales Model | Prefix | PT1 | PT2 | PT3 | PT4 | PT5 | PT6 | PT7 | PT8 | PT9 | PT10 | PT12 |
|-------------|--------|----------------------|--|--|--|--------------------------------------|--|----------------------|----------------------|--|-----------------------|--|
| | | Boom Foot | Boom Cylinder Rod End | Stick Cylinder Head End | Boom Nose or Stick Pivot | Stick Cylinder Rod End | Bucket Cylinder Head End | Idler Link Stick End | Stick Nose | Bucket Cylinder Rod End | Power Link Bucket End | Boom Cylinder Head End |
| 313D | GAP | (2) 273-6814 Bushing | (2) 290-9178 Bushing | 229-1093 Bushing | (2) 357-5710 Bushing (2) 273-6814 Bushing | 229-1093 Bushing | 229-1095 Bushing | (2) 229-1095 Bushing | (2) 229-1091 Bushing | 248-7857 Bushing (2) 248-7835 Bushing | (2) 229-1092 Bushing | (2) 273-6945 Bushing |
| 313D2 | RXZ | | | | (2) 357-5710 Bushing | | | | | | | |
| | SYG | | | | (2) 357-5710 Bushing (2) 357-5710 Bushing | | | | | | | |
| | LCY | | | | (2) 273-6814 Bushing (2) 357-5710 Bushing | | | | | | | |
| 315D | CJN | (2) 244-4277 Bushing | (2) 241-7380 Bushing (2) 240-2913 Bushing | 343-9331 Bushing 260-2527 Bushing 241-7231 Bushing | (2) 244-4277 Bushing (2) 228-5615 Bushing | 260-2527 Bushing 241-7231 Bushing | 260-2528 Bushing 260-2530 Bushing 284-7311 Bushing 343-9329 Bushing 248-7857 Bushing | (2) 229-1096 Bushing | (2) 228-5614 Bushing | (2) 244-4360 Bushing 240-2912 Bushing 240-2913 Bushing | (2) 228-5614 Bushing | (2) 260-2526 Bushing (2) 228-5614 Bushing |





Cat Filters Provide Longer Injector Life

Chances are, you don't skip oil changes or regular maintenance on the family car. So why skip planned maintenance on your Cat equipment? Cat fuel filters outperform the competition, with up to 45% longer injector life and up to 80% decreased cost per hour.*



Productivity & Hydraulics Go Hand In Hand

If your hydraulic system isn't performing at peak efficiency, it's robbing your machine of performance. Efficiency losses usually occur slowly and can reach 20% before you detect a problem — that's one day of lost production every week! These losses can also increase your fuel consumption and operating costs.



Need help?

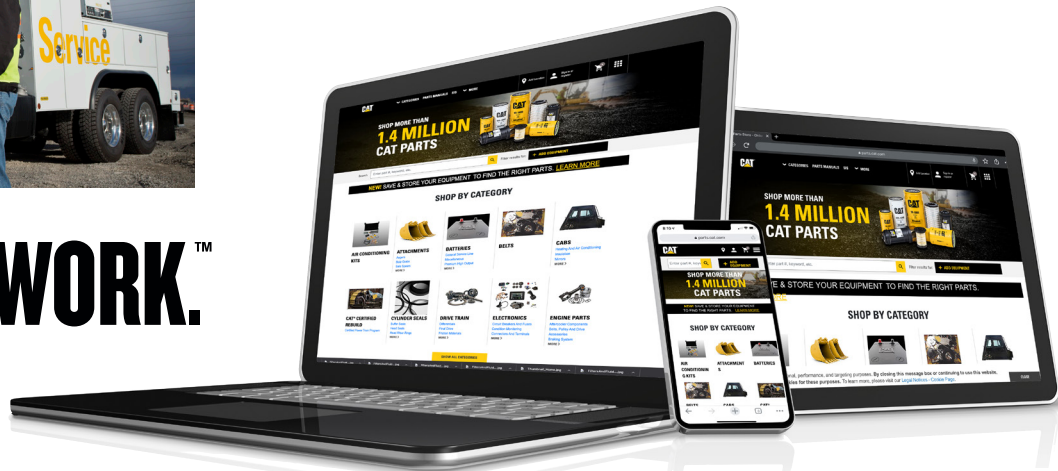
Your local Cat dealer can provide:

- Technical Support
- Customer Value Agreements
- Oil sample analysis
- Parts needed and equipment fit
- Repair financing
- Rental Services

Find your local dealer at www.cat.com today.



LET'S DO THE WORK.™



To buy Cat parts online, visit Parts.cat.com if you have a dealer account or MyParts.cat.com (US only) if you don't yet have an account.

* Visit <https://www.cat.com/filtersandfluids> for more details

