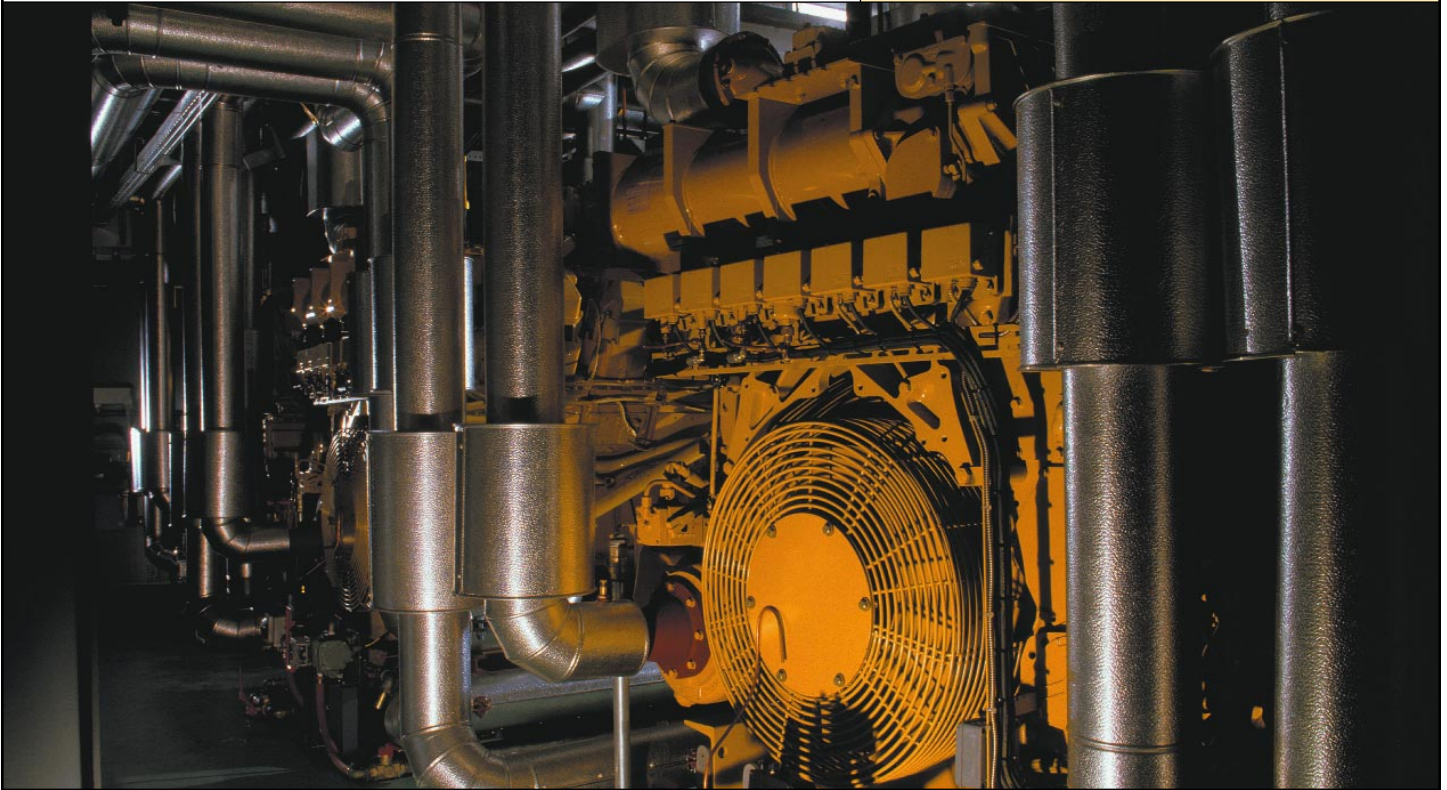


# Cat<sup>®</sup> NGEO<sup>™</sup>

For natural gas engines and other engines requiring low ash oil.

SAE 30, SAE 40



## Recommended Use

- Designed for engines using gaseous fuels
- Compatible with exhaust catalyst applications that require a low-phosphorus oil
- Provides optimum engine and oil life with low-sulfur gaseous fuels that contain less than 0.43 mg hydrogen sulfide per mega Joule (0.35 mg hydrogen sulfide per BTU)

## Discover the Difference

Cat NGEO is formulated from select base stocks blended with special additives to provide an economical engine oil for natural gas applications.

Cat NGEO is developed, tested and approved by Caterpillar to meet the same high standards as Genuine Cat Parts.

**High-Endurance Lubrication**—Performs throughout the long oil change intervals common for gaseous fuel engines.

**Reduced Piston and Cylinder Wear**—Anti-oxidation and anti-nitration properties prevent carbon deposit buildup to minimize scuffing, scoring and wear.

**Increased Valve Life**—Protects against damage to guide faces and seals.

**Corrosion Protection**—Neutralizes acids to prevent rust and copper corrosion.

**High-Temperature Performance**—Provides excellent thermal stability and resists foaming and sludge formation.

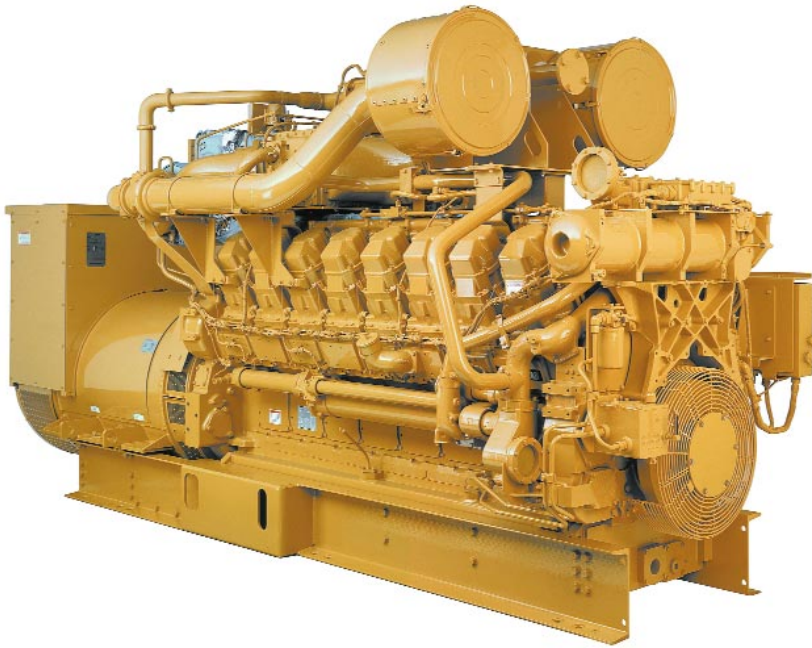
## Caterpillar. The difference counts.<sup>™</sup>

Cat Dealers define world-class product support. We offer you the right parts and service solutions, when and where you need them.

The Cat Dealer network of highly trained experts keeps your entire fleet up and running to maximize your equipment investment.

**CATERPILLAR<sup>®</sup>**

# Cat NGE0



## Other Recommended Oils

NGEO EL350™

For Extended Drain Intervals.

## Typical Characteristics\*

SAE Viscosity Grade	40
Gravity, API (ASTM D286)	28
Flash Point, °C (ASTM D92)	252
Pour Point, °C (ASTM D97)	-15
Viscosity	
cSt @ 40°C (ASTM D445)	126.2
cSt @ 100°C (ASTM D445)	13.2
Viscosity Index (ASTM D567)	98
Sulfated Ash, % wt. (ASTM D874)	0.52
TBN, mg KoH/g (ASTM D2896)	5.6
Phosphorus, % wt. (Spectro or AA)	0.030
Calcium, % wt. (Spectro or AA)	0.12

\*The values shown are typical values and should not be used as quality control parameters to either accept or reject product. Specifications are subject to change without notice.

## S•O•S™ Services for early problem detection

Protect your investment with Cat S•O•S oil analysis, the ultimate detection and diagnostic tool for your equipment. S•O•S helps you detect potential problems before they can lead to major failures and costly, unscheduled downtime.

## Cat Filters: Complete protection for your engine

Combine Cat Fluids with Cat Filters for the highest level of contamination control and protection for your machine. We recommend Cat Filters for all Cat engine applications.

## Health and Safety

Under normal conditions of intended use, this product does not pose a risk to health. Excessive exposure may result in eye, skin or respiratory irritation. Always observe good hygiene measures. Read and understand the Material Safety Data Sheet (MSDS) before using this product. For a copy of the MSDS, contact us or visit the web at [www.catmsds.com](http://www.catmsds.com).

**CATERPILLAR®**